

Anti-C/EBP Beta Antibody (7Q839)

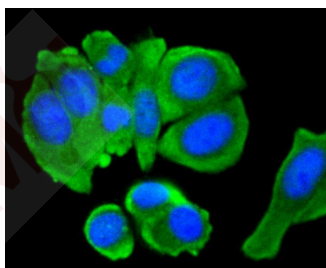
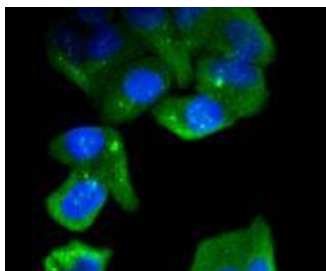
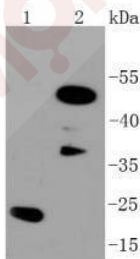
Product Details

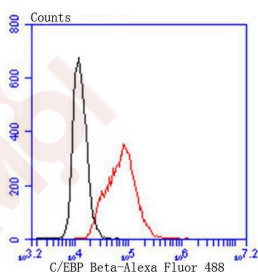
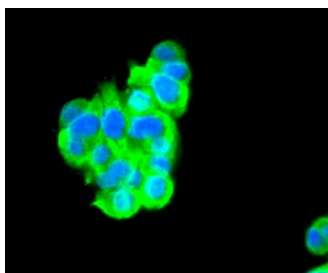
Ig Type:	IgG
Reactivity:	Human,Mouse,Rat
Conjugation:	Unconjugated
Molecular Weight:	Theoretical: 36 kDa.
Clone:	7Q839
Purification:	ProA affinity purified

Applications

Verified Activity:

1. Western blot analysis of C/EBP Beta on different lysates using anti-C/EBP Beta antibody at 1/1,000 dilution. Positive control: Lane 1: Hela, Lane 2: PC-12.
2. ICC staining C/EBP Beta in Hela cells (green). The nuclear counter stain is DAPI (blue). Cells were fixed in paraformaldehyde, permeabilised with 0.25% Triton X100/PBS.
3. ICC staining C/EBP Beta in MCF-7 cells (green). The nuclear counter stain is DAPI (blue). Cells were fixed in paraformaldehyde, permeabilised with 0.25% Triton X100/PBS.
4. ICC staining C/EBP Beta in PC-12 cells (green). The nuclear counter stain is DAPI (blue). Cells were fixed in paraformaldehyde, permeabilised with 0.25% Triton X100/PBS.
5. Flow cytometric analysis of Hela cells with C/EBP Beta antibody at 1/50 dilution (red) compared with an unlabelled control (cells without incubation with primary antibody; black). Alexa Fluor 488-conjugated goat anti rabbit IgG was used as the secondary antibody.





Application: FCM,ICC/IF,IP,WB

Recommended WB: 1:1000-2000; ICC/IF: 1:50-200; FCM: 1:50-100

Properties

Stability & Storage: Store at -20°C or -80°C for 12 months. Avoid repeated freeze-thaw cycles.

Shipping: Shipping with blue ice.

Antigen Details

Immunogen: Recombinant Protein

Uniprot ID: P17676

LAP;NFIL6;CCAAT/enhancer-binding protein beta;Silencer factor B;CCAAT Enhancer Binding Protein beta;CEBP β ;C EBP beta;NF IL6;SFB;CEBPB;Nuclear factor NF IL6;IL 6DBP;Interleukin 6 dependent binding protein;C/EBP beta;TCF-5;SF B;Liver activator protein;Liver enriched transcriptional activator;CLEBP beta;TCF5;Transcription factor 5;IL6DBP;C/EBP related protein 2;CRP2;AGP/EBP

Research Background

CCAAT-enhancer binding proteins (C/EBP) are basic region/leucine zipper (bZIP) transcription factors selectively expressed during the differentiation of liver, adipose tissue, blood cells and the endocrine pancreas. C/EBP β is a member of the C/EBP transcription factor family. The C/EBP β gene encodes several isoforms containing truncated transcription activation domains due to the alternative translational initiation at multiple AUG start sites. C/EBP β is also known as interleukin 6-dependent DNA-binding protein (IL6DBP), liver activator protein (LAP) or liver-enriched transcriptional activator protein transcription factor 5 (TCF5). C/EBP β contributes to the regulation of the acute phase response in hepatocytes. Stat3 has an important function in IL-6-mediated transcription of the C/EBP β gene that has direct implication for acute phase response in liver cells. The C/EBP β form requires phosphorylation for its DNA binding ability, and increase binding of C/EBP β isoforms during acute-phase reaction occurs through its upregulation and structural modification.

Inhibitor · Natural Compounds · Compound Libraries · Recombinant Proteins

This product is for Research Use Only · Not for Human or Veterinary or Therapeutic Use

Tel:781-999-4286 E_mail:info@targetmol.com Address:34 Washington Street,Wellesley Hills,MA 02481