

Anti-SMARCA4 Antibody (3I277)

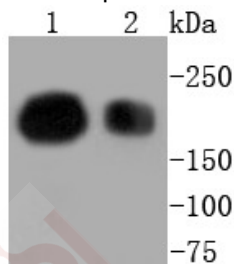
Product Details

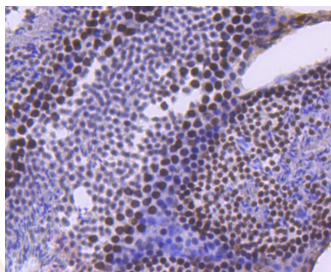
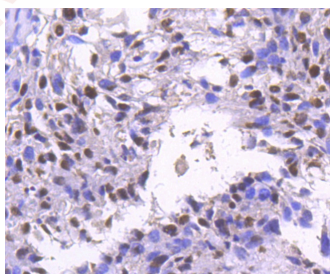
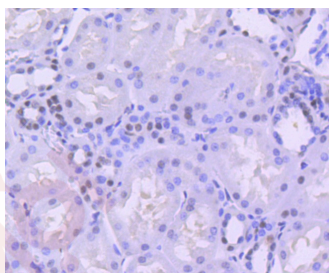
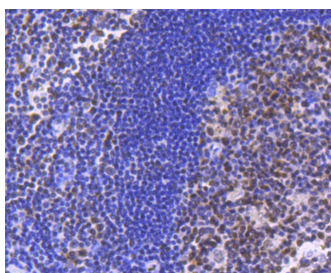
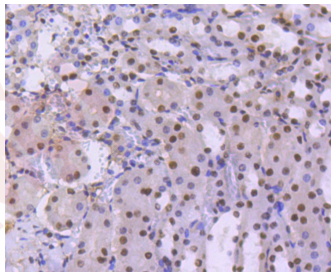
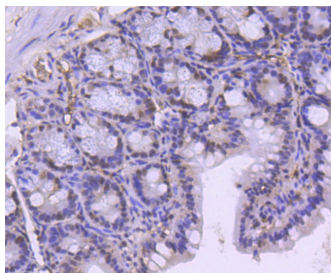
Ig Type:	IgG
Reactivity:	Human,Mouse,Rat
Conjugation:	Unconjugated
Molecular Weight:	Theoretical: 185 kDa.
Clone:	3I277
Purification:	ProA affinity purified

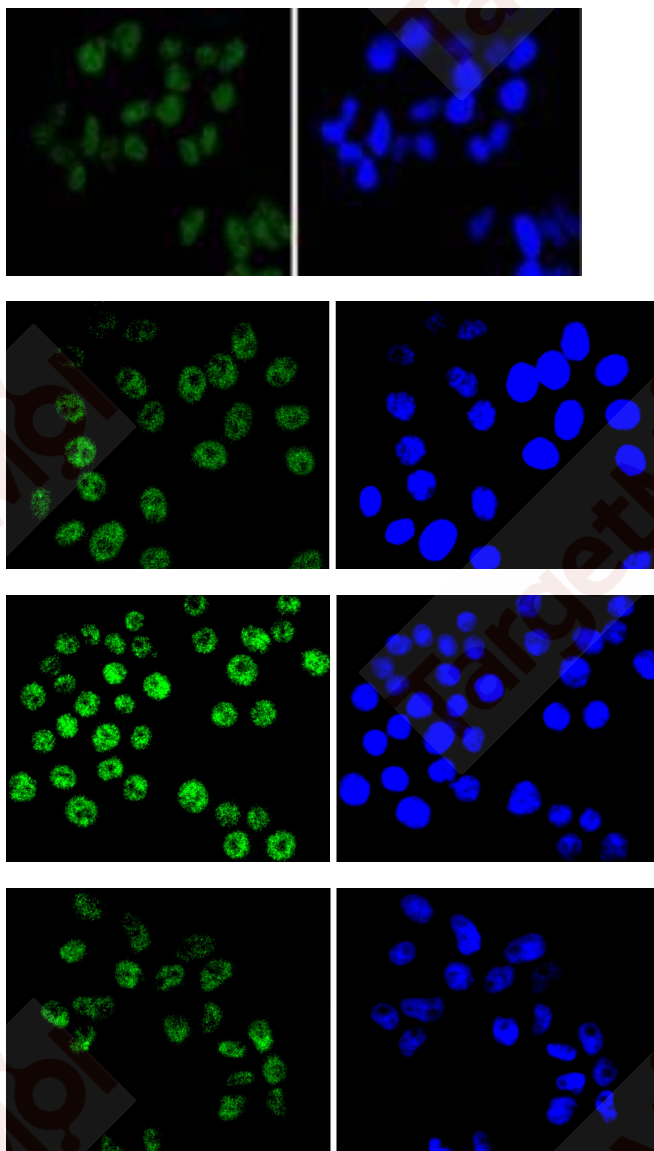
Applications

Verified Activity:

1. Western blot analysis of BRG1 on different lysates using anti-BRG1 antibody at 1/1,000 dilution. Positive control: Lane 1: Jurkat, Lane 2: HepG2.
2. Immunohistochemical analysis of paraffin-embedded mouse colon tissue using anti-BRG1 antibody. Counter stained with hematoxylin.
3. Immunohistochemical analysis of paraffin-embedded mouse kidney tissue using anti-BRG1 antibody. Counter stained with hematoxylin.
4. Immunohistochemical analysis of paraffin-embedded human tonsil tissue using anti-BRG1 antibody. Counter stained with hematoxylin.
5. Immunohistochemical analysis of paraffin-embedded human kidney tissue using anti-BRG1 antibody. Counter stained with hematoxylin.
6. Immunohistochemical analysis of paraffin-embedded human breast carcinoma tissue using anti-BRG1 antibody. Counter stained with hematoxylin.
7. Immunohistochemical analysis of paraffin-embedded mouse testis tissue using anti-BRG1 antibody. Counter stained with hematoxylin.
8. ICC staining BRG1 in Hela cells (green). The nuclear counter stain is DAPI (blue). Cells were fixed in paraformaldehyde, permeabilised with 0.25% Triton X100/PBS.
9. ICC staining BRG1 in HepG2 cells (green). The nuclear counter stain is DAPI (blue). Cells were fixed in paraformaldehyde, permeabilised with 0.25% Triton X100/PBS.
10. ICC staining BRG1 in SW480 cells (green). The nuclear counter stain is DAPI (blue). Cells were fixed in paraformaldehyde, permeabilised with 0.25% Triton X100/PBS.
11. ICC staining BRG1 in RH-35 cells (green). The nuclear counter stain is DAPI (blue). Cells were fixed in paraformaldehyde, permeabilised with 0.25% Triton X100/PBS.







Application: ICC/IF,IHC,IP,WB

Recommended WB: 1:1000-5000; IHC: 1:50-200; ICC/IF: 1:50-200

Properties

Stability & Storage: Store at -20°C or -80°C for 12 months. Avoid repeated freeze-thaw cycles.

Shipping: Shipping with blue ice.

Antigen Details

Immunogen: Recombinant Protein

Uniprot ID: P51532

Research Background

The SWI-SNF complex is involved in the activation of transcription via the remodeling of nucleosome structure in an ATP-dependent manner. Brm (also designated SNF2 α) and Brg-1 (also designated SNF2 β) are the ATPase subunits of the mammalian SWI-SNF complex. Brm, Brg-1, Ini1 (integrase interactor 1, also designated SNF5), BAF155 (also designated SRG3) and BAF170 are thought to comprise the functional core of the SWI-SNF complex. Addition of Ini1, BAF155 and BAF170 to Brg-1 appears to increase remodeling activity. Other complex subunits are thought to play regulatory roles. hSNF2L and hSNF2H both appear to be homologs of Drosophila ISWI, a Brm related ATPase that is

A DRUG SCREENING EXPERT

present in chromatin remodeling complexes other than SWI/SNF, including the NURF (nucleosome remodeling factor).

Inhibitor · Natural Compounds · Compound Libraries · Recombinant Proteins

This product is for Research Use Only · Not for Human or Veterinary or Therapeutic Use

Tel: 781-999-4286 E_mail: info@targetmol.com Address: 34 Washington Street, Wellesley Hills, MA 02481