

## Anti-BrdU Antibody (8W188)

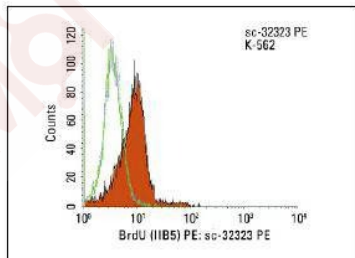
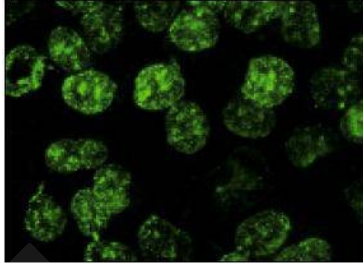
### Product Details

Reactivity:	Bromodeoxyuridine
Conjugation:	Unconjugated
Clone:	8W188
Purification:	ProA affinity purified

### Applications

#### Verified Activity:

1. Immunofluorescence staining of methanol-fixed BrdU-labeled HeLa cells showing nuclear localization.
2. Intracellular FCM analysis of fixed and permeabilized untreated (dotted blue histogram) and BrdU treated (solid orange histogram) K-562 cells. Green line histogram represents the isotype control, normal mouse IgG1.



Application:	FCM,IF,IHC-P
Recommended	IHC-P: 1:50-500; FCM: 1 µg per 1 x 10 <sup>6</sup> cells

### Properties

Stability & Storage:	Store at 2°C-8°C for 12 months, do not freeze.
Shipping:	Shipping with blue ice.

### Antigen Details

Immunogen: Peptide  
Synonyms: Budr;Bromodeoxyuridine

---

### Research Background

The halogenated pyrimidine thymidine analog bromodeoxyuridine (BrdU) is incorporated into newly synthesized DNA strands of S-phase cells and is useful for estimating the fraction of cells in S-phase. Additionally, the analysis of the uptake of BrdU is a reliable method to quantitate the degree of DNA-synthesis. BrdU is also useful for studying sister chromatid exchange and to isolate nascent DNA. UV-induced excision-repair synthesis is one method for incorporating BrdU into cellular DNA. BrdU antibodies bind to the exposed BrdU in single-stranded DNA after a hydrochloric acid denaturation step or nuclease digestion. Protease antigen recovery is necessary for most tissues or cells fixed with crosslinking agents such as formalin but may decrease the specificity of BrdUrd immunodetection. The monoclonal antibody Bu20a against BrdU stains BrdU incorporated into the nuclei of a wide range of proliferating cell types including human tumors growing in nude mice and tonsil lymphoid.

**Inhibitor · Natural Compounds · Compound Libraries · Recombinant Proteins**

**This product is for Research Use Only · Not for Human or Veterinary or Therapeutic Use**

Tel:781-999-4286 E\_mail:info@targetmol.com Address:34 Washington Street,Wellesley Hills,MA 02481