

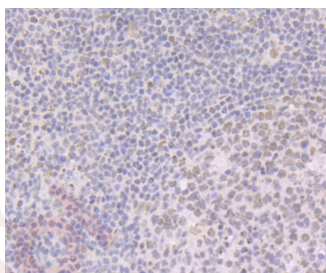
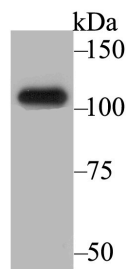
Anti-BRD2 Antibody (7Q375)

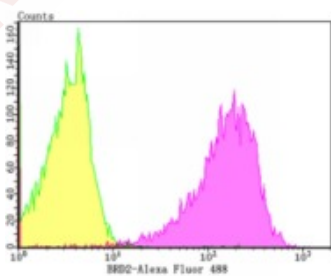
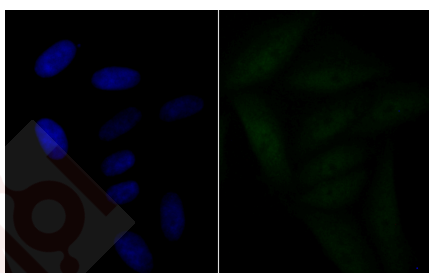
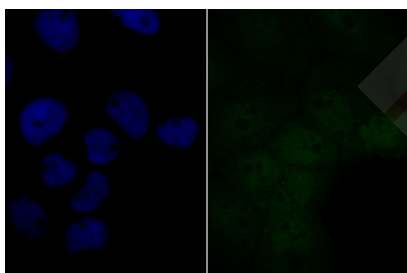
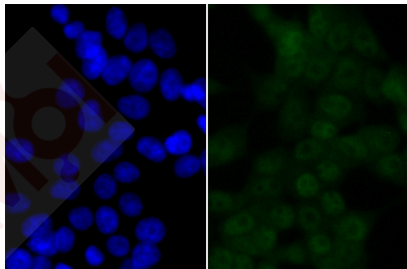
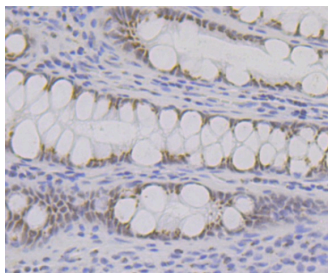
Product Details

Ig Type:	IgG
Reactivity:	Human
Conjugation:	Unconjugated
Molecular Weight:	Theoretical: 88 kDa.
Clone:	7Q375
Purification:	ProA affinity purified

Applications

- Verified Activity:
1. Western blot analysis of BRD2 on SiHa cell lysate using anti-BRD2 antibody at 1/2,000 dilution.
 2. Immunohistochemical analysis of paraffin-embedded human tonsil tissue using anti-BRD2 antibody. Counter stained with hematoxylin.
 3. Immunohistochemical analysis of paraffin-embedded human colon tissue using anti-BRD2 antibody. Counter stained with hematoxylin.
 4. ICC staining BRD2 in 293T cells (green). The nuclear counter stain is DAPI (blue). Cells were fixed in paraformaldehyde, permeabilised with 0.25% Triton X100/PBS.
 5. ICC staining BRD2 in A431 cells (green). The nuclear counter stain is DAPI (blue). Cells were fixed in paraformaldehyde, permeabilised with 0.25% Triton X100/PBS.
 6. ICC staining BRD2 in SiHa cells (green). The nuclear counter stain is DAPI (blue). Cells were fixed in paraformaldehyde, permeabilised with 0.25% Triton X100/PBS.
 7. Flow cytometric analysis of 293T cells with BRD2 antibody at 1/100 dilution (purple) compared with an unlabelled control (cells without incubation with primary antibody; yellow). Alexa Fluor 488-conjugated goat anti-rabbit IgG was used as the secondary antibody.





Application: FCM,ICC,IHC,WB

Recommended WB: 1:500-2000; IHC: 1:50-200; ICC: 1:50-200; FCM: 1:50-100

Properties

Stability & Storage: Store at -20°C or -80°C for 12 months. Avoid repeated freeze-thaw cycles.

Shipping: Shipping with blue ice.

Antigen Details

Immunogen:	Recombinant Protein: human BRD2 aa 1-200
Antigen Species:	human
Uniprot ID:	P25440
Synonyms:	DKFZp686N0336;FSH;Bromodomain-containing protein 2;BRD 2;Really interesting new gene 3 protein;BRD2_HUMAN;Brd2;O27.1.1;FLJ31942;FSRG1;KIAA9001;RNF3;Female sterile homeotic related gene 1, mouse, homolog of;D6S113E;RING3;RING3 PROTEIN;Bromodomain containing 2;NAT;Female sterile homeotic related gene 1

Research Background

The bromodomain-containing proteins include BRD2, BRD3, BRD4 and BRDT. BRD2 (RING3 protein) is a mitogen-activated nuclear protein whose gene is located in the human MHC II region, suggesting its relation to HLA-associated diseases. The gene encoding BRD3 (RING3-like protein) contains two bromodomains and maps to chromosome 9q34. BRD4 (HUNK1 protein) is a nuclear protein involved in the regulation of chromosomal dynamics during mitosis. The testis-specific bromodomain protein BRDT contains a PEST sequence, indicating that it undergoes rapid intracellular degradation. The bromodomain-containing proteins are ubiquitously expressed.

Inhibitor · Natural Compounds · Compound Libraries · Recombinant Proteins

This product is for Research Use Only · Not for Human or Veterinary or Therapeutic Use

Tel:781-999-4286 E_mail:info@targetmol.com Address:34 Washington Street,Wellesley Hills,MA 02481