

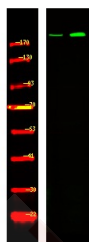
## Anti-Phospho-BRCA1 (Ser1497) Polyclonal Antibody

### Product Details

|                   |  |
|-------------------|--|
| Ig Type:          | IgG  |
| Reactivity:       | Human  |
| Conjugation:      | Unconjugated   |
| Molecular Weight: | Theoretical: 220 kDa.  |
| Purification:     | Antibodies were produced by immunizing rabbits with synthetic phosphopeptide and KLH conjugates. Antibodies were purified by affinity-chromatography using epitope-specific phosphopeptide. Non-phospho specific antibodies were removed by chromatography using non-phosphopeptide. |

### Applications

Verified Activity: 1. Western Blot analysis of lysates of mouse brain (Left) and rat brain (Right), using primary antibody at 1:1000 dilution.



|              |            |
|--------------|------------|
| Application: | WB         |
| Recommended  | WB: 1:1000 |

### Properties

|                      |   |
|----------------------|---|
| Stability & Storage: | Store at -20°C or -80°C for 12 months. Avoid repeated freeze-thaw cycles. |
| Shipping:            | Shipping with blue ice.   |

### Antigen Details

|                  |  |
|------------------|--|
| Immunogen:       | A synthesized phosphopeptide: human BRCA1 around the phosphorylation site of Ser1497 |
| Antigen Species: | Human  |
| Uniprot ID:      | P38398   |
| Synonyms:        | p-BRCA1 (S1497);p-BRCA1 (Ser1497);BRCA1 (p-S1497);BRCA1 (p-Ser1497)                  |

**Inhibitor · Natural Compounds · Compound Libraries · Recombinant Proteins**

This product is for Research Use Only. Not for Human or Veterinary or Therapeutic Use

Tel:781-999-4286 E\_mail:info@targetmol.com Address:34 Washington Street,Wellesley Hills,MA 02481