

Anti-BPI Antibody (8T644)

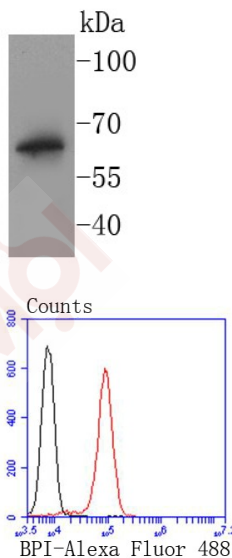
Product Details

Ig Type:	IgG
Reactivity:	Human,zebrafish
Conjugation:	Unconjugated
Molecular Weight:	Theoretical: 57 kDa.
Clone:	8T644
Purification:	ProA affinity purified

Applications

Verified Activity:

1. Western blot analysis of BPI on THP-1 cells lysates using anti-BPI antibody at 1/1,000 dilution.
2. Flow cytometric analysis of Jurkat cells with BPI antibody at 1/50 dilution (red) compared with an unlabelled control (cells without incubation with primary antibody; black). Alexa Fluor 488-



Application:	FCM,WB
Recommended	WB: 1:1000-2000; FCM: 1:50-100

Properties

Stability & Storage:	Store at -20°C or -80°C for 12 months. Avoid repeated freeze-thaw cycles.
Shipping:	Shipping with blue ice.

Antigen Details

Immunogen: Recombinant Protein
Uniprot ID: P17213
Synonyms: bactericidal/permeability-increasing protein;rBPI;BPIFD1

Research Background

The bactericidal permeability increasing protein (BPI) is an antibacterial and endotoxin-neutralizing molecule that is abundant in the granules of polymorphonuclear leukocytes (neutrophil granules). The 31.5-kb-long human BPI gene maps to chromosome 20q11.23-q12, contains 15 exons, and encodes a 456 amino acid protein. Epithelial cells which line mucosal surfaces are the first line of defense against bacterial invasion and infection. BPI localizes to the cell surface of epithelial cells and blocks endotoxin-mediated signaling, thereby protecting mucosal surfaces against gram-negative bacteria and their endotoxin. BPI, lipopolysaccharide binding protein (LBP), phospholipid transfer protein (PLTP), and cholesteryl ester transfer protein (CETP) constitutes a family of functionally related proteins.

Inhibitor · Natural Compounds · Compound Libraries · Recombinant Proteins

This product is for Research Use Only · Not for Human or Veterinary or Therapeutic Use

Tel:781-999-4286 E_mail:info@targetmol.com Address:34 Washington Street,Wellesley Hills,MA 02481