

## Anti-ALB Antibody (1R211)

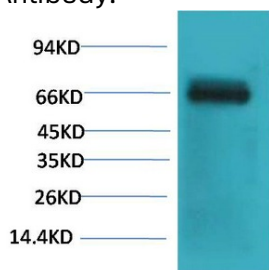
### Product Details

Reactivity:	Cow
Conjugation:	Unconjugated
Molecular Weight:	Actual: 66 kDa.
Clone:	1R211
Purification:	The antibody was affinity-purified from antiserum by affinity-chromatography

### Applications

#### Verified Activity:

1. Western blot analysis of Bovine Serum Albumin using Bovine Serum Albumin Monoclonal Antibody.



Application:	WB
Recommended	WB: 1:1000-2000

### Properties

Stability & Storage:	Store at -20°C or -80°C for 12 months. Avoid repeated freeze-thaw cycles.
Shipping:	Shipping with blue ice.

### Antigen Details

Immunogen:	Protein
Uniprot ID:	P02768
Synonyms:	ALB;PRO0883;ANALBA;Albumin;FDAH;PRO1341;PRO0903;Serum albumin

**Inhibitor · Natural Compounds · Compound Libraries · Recombinant Proteins**

This product is for Research Use Only. Not for Human or Veterinary or Therapeutic Use

Tel:781-999-4286 E\_mail:info@targetmol.com Address:34 Washington Street,Wellesley Hills,MA 02481