

Anti-BMI-1 Antibody (8M743)

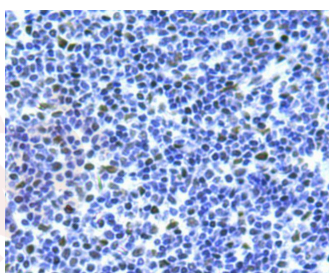
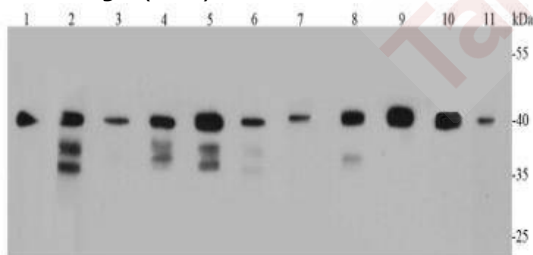
Product Details

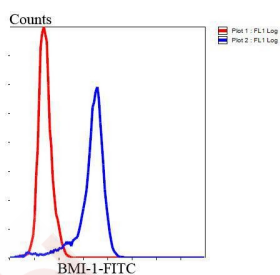
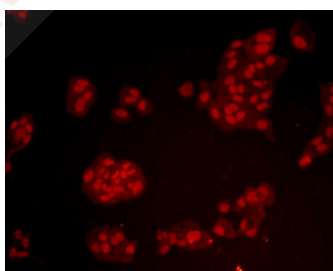
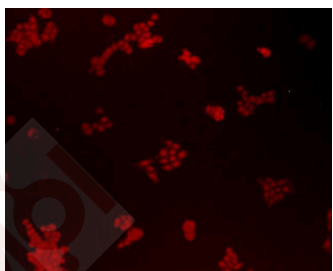
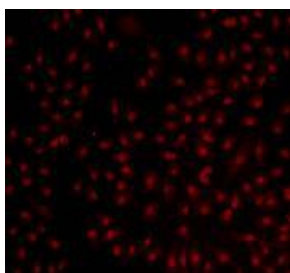
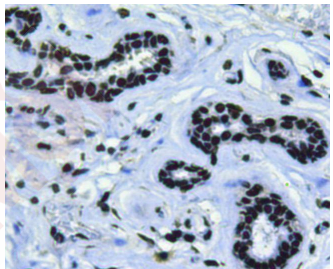
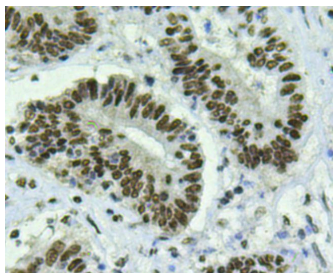
Reactivity:	Human, Mouse, Rat
Conjugation:	Unconjugated
Molecular Weight:	Theoretical: 37 kDa.
Clone:	8M743
Purification:	ProA affinity purified

Applications

Verified Activity:

1. Western blot analysis of Bmi1 on different lysates using anti-Bmi1 antibody at 1/1,000 dilution. Positive control: Lane 1: 293T, Lane 2: Jurkat, Lane 3: Hela,, Lane 4: MCF-7, Lane 5: HepG2, Lane 6: NIH/3T3, Lane 7: PC12, Lane 8: Mouse kidney, Lane 9: Human kidney, Lane 10: K562, Lane 11: Human brain.
2. Immunohistochemical analysis of paraffin-embedded human tonsil tissue using anti-Bmi1 antibody. Counter stained with hematoxylin.
3. Immunohistochemical analysis of paraffin-embedded human colon cancer tissue using anti-Bmi1 antibody. Counter stained with hematoxylin.
4. Immunohistochemical analysis of paraffin-embedded human breast cancer tissue using anti-Bmi1 antibody. Counter stained with hematoxylin.
5. ICC staining Bmi1 in A549 cells (red). Cells were fixed in paraformaldehyde, permeabilised with 0.25% Triton X100/PBS.
6. ICC staining Bmi1 in Lovo cells (red). Cells were fixed in paraformaldehyde, permeabilised with 0.25% Triton X100/PBS.
7. ICC staining Bmi1 in Hela cells (red). Cells were fixed in paraformaldehyde, permeabilised with 0.25% Triton X100/PBS.
8. Flow cytometric analysis of Hela cells with BMI1 antibody at 1/100 dilution (blue) compared with an unlabelled control (cells without incubation with primary antibody; red). Goat anti mouse IgG (FITC) was used as the secondary antibody.





Application: FCM, ICC, IHC, WB

Recommended WB: 1:1000; IHC: 1:200; ICC: 1:200; FCM: 1:100-200

Properties

Stability & Storage: Store at -20°C or -80°C for 12 months. Avoid repeated freeze-thaw cycles.

Shipping: Shipping with blue ice.

Antigen Details

Immunogen: Recombinant Protein: human Bmi1 full sequence

Antigen Species: Human

Uniprot ID: P35226

Research Background

The Bmi-1 was identified initially as an oncogene that cooperates with c-myc in the generation of B-cell lymphoma. It contributes to the maintenance of cell identity, stem cell self-renewal, cell cycle regulation, and oncogenesis by maintaining the silenced state of genes that promote cell lineage specification, cell death, and cell-cycle arrest.

Inhibitor · Natural Compounds · Compound Libraries · Recombinant Proteins

This product is for Research Use Only · Not for Human or Veterinary or Therapeutic Use

Tel:781-999-4286 E_mail:info@targetmol.com Address:34 Washington Street,Wellesley Hills,MA 02481
