

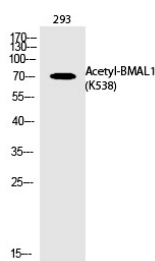
Anti-Acetyl-BMAL1 (Lys538) Polyclonal Antibody

Product Details

Ig Type:	IgG
Reactivity:	Human,Mouse,Rat
Conjugation:	Unconjugated
Molecular Weight:	Actual: 70 kDa.
Purification:	The antibody was affinity-purified from rabbit antiserum by affinity-chromatography using epitope-specific immunogen.

Applications

Verified Activity: 1. Western Blot analysis of 293 cells using Acetyl-BMAL1 (K538) Polyclonal Antibody.



Application: ELISA,WB
Recommended WB: 1:500-2000; ELISA: 1:20000

Properties

Stability & Storage: Store at -20°C or -80°C for 12 months. Avoid repeated freeze-thaw cycles.
Shipping: Shipping with blue ice.

Antigen Details

Immunogen: A synthesized acetylpeptide: human BMAL1 around the acetylation site of K538
Antigen Species: human
Synonyms: BMAL1K538ac;Ac-BMAL1 (Lys538);Ac-BMAL1 (K538);Acetyl-BMAL1 (K538);BMAL1K538-acetylated;Ac-BMAL1K538

Inhibitor · Natural Compounds · Compound Libraries · Recombinant Proteins

This product is for Research Use Only. Not for Human or Veterinary or Therapeutic Use

Tel:781-999-4286 E_mail:info@targetmol.com Address:34 Washington Street,Wellesley Hills,MA 02481