

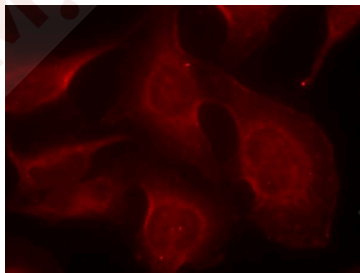
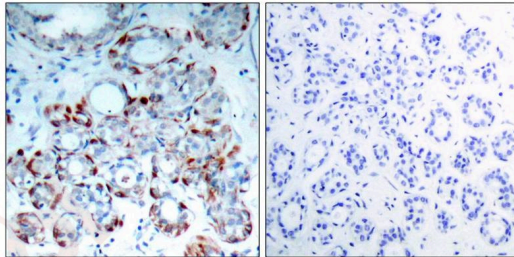
Anti-Phospho-Bim (Ser69) Polyclonal Antibody

Product Details

Ig Type:	IgG
Reactivity:	Human,Mouse,Rat
Conjugation:	Unconjugated
Purification:	Antibodies were produced by immunizing rabbits with synthetic phosphopeptide and KLH conjugates. Antibodies were purified by affinity-chromatography using epitope-specific phosphopeptide. Non-phospho specific antibodies were removed by chromatography using non-phosphopeptide.

Applications

- Verified Activity:
1. Immunohistochemical analysis of paraffin-embedded human breast carcinoma tissue using BIM(Phospho-Ser69) Antibody TMAC-00442(left) or the same antibody preincubated with blocking peptide(right).
 2. Immunofluorescence staining of methanol-fixed Hela cells using BIM(Phospho-Ser69) Antibody TMAC-00442.



Application: IF,IHC

Properties

Stability & Storage:	Store at 2°C-8°C for 1 month. Store at -20°C or -80°C for 12 months. Avoid repeated freeze-thaw cycles.
Shipping:	Shipping with blue ice.

Antigen Details

Immunogen: Peptide sequence around phosphorylation site of serine 69 (P-A-S(p)-P-G) derived from Human BIM

Antigen Species: Human

Uniprot ID: O43521

Synonyms: Bim (p-S69);p-Bim (Ser69);Bim (p-Ser69);p-Bim (S69)

Research Background

Induces apoptosis. Isoform BimL is more potent than isoform BimEL. Isoform Bim-a1, isoform Bim-a2 and isoform Bim-a3 induce apoptosis, although less potent than the isoforms BimEL, BimL and BimS. Isoform Bim-gamma induces apoptosis

Inhibitor · Natural Compounds · Compound Libraries · Recombinant Proteins

This product is for Research Use Only· Not for Human or Veterinary or Therapeutic Use

Tel:781-999-4286 E_mail:info@targetmol.com Address:34 Washington Street,Wellesley Hills,MA 02481