

Anti-Bim Antibody (2H443)

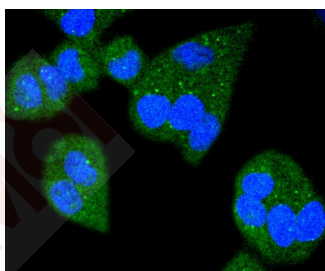
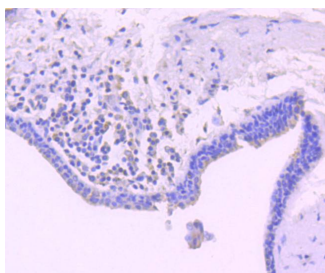
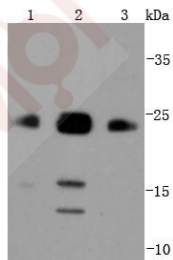
Product Details

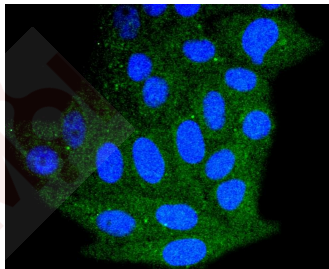
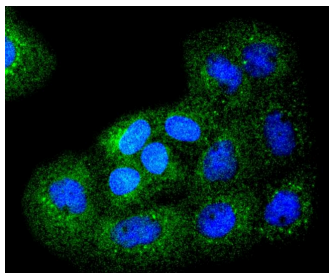
Ig Type:	IgG
Reactivity:	Human
Conjugation:	Unconjugated
Molecular Weight:	Theoretical: 22/16/13 kDa.
Clone:	2H443
Purification:	ProA affinity purified

Applications

Verified Activity:

1. Western blot analysis of Bim on different lysates using anti-Bim antibody at 1/1,000 dilution. Positive control: Lane 1: Raji, Lane 2: Jurkat, Lane 3: A431.
2. Immunohistochemical analysis of paraffin-embedded human breast carcinoma tissue using anti-Bim antibody. Counter stained with hematoxylin.
3. ICC staining Bim in Hela cells (green). The nuclear counter stain is DAPI (blue). Cells were fixed in paraformaldehyde, permeabilised with 0.25% Triton X100/PBS.
4. ICC staining Bim in A431 cells (green). The nuclear counter stain is DAPI (blue). Cells were fixed in paraformaldehyde, permeabilised with 0.25% Triton X100/PBS.
5. ICC staining Bim in HepG2 cells (green). The nuclear counter stain is DAPI (blue). Cells were fixed in paraformaldehyde, permeabilised with 0.25% Triton X100/PBS.





Application: ICC,IHC,IP,WB
Recommended WB: 1:1000-2000; IHC: 1:50-200; ICC: 1:50-200

Properties

Stability & Storage: Store at -20°C or -80°C for 12 months. Avoid repeated freeze-thaw cycles.
Shipping: Shipping with blue ice.

Antigen Details

Immunogen: Recombinant Protein
Uniprot ID: O43521
Synonyms: BIM;BAM;BOD;BCL2-like 11 (apoptosis facilitator)

Research Background

Pro-apoptotic Bcl-2 family members promote cell death by neutralizing their apoptotic relatives, which otherwise maintain cell viability by regulating caspase activity. Bim belongs to the BH3-only subgroup of Bcl-2 related proteins, and exists in three distinct isoforms, BimS (short), BimL (long) and BimEL (extra long). ERK1/2 phosphorylates BimEL, resulting in rapid degradation of the isoform via the proteasome pathway. At least three sites for ERK1/2 phosphorylation exist on BimEL, whereas ERK1/2 does not effect BimS and BimL, implying a unique role for BimEL in cell survival signaling.

Inhibitor · Natural Compounds · Compound Libraries · Recombinant Proteins

This product is for Research Use Only· Not for Human or Veterinary or Therapeutic Use

Tel:781-999-4286 E_mail:info@targetmol.com Address:34 Washington Street,Wellesley Hills,MA 02481