

## Anti-Phospho-Beta-NaCH (Thr615) Polyclonal Antibody

### Product Details

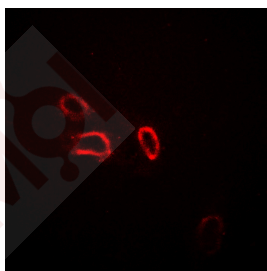
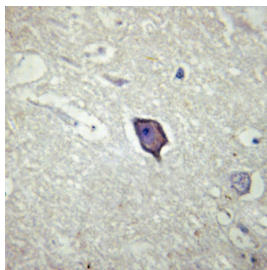
Ig Type:	IgG
Reactivity:	Human,Mouse,Rat
Conjugation:	Unconjugated
Molecular Weight:	Theoretical: 73 kDa.
Purification:	The antibody was purified by immunogen affinity chromatography.

### Applications

#### Verified Activity:

1. Western blot analysis of Beta-NaCH (phospho-Thr615) expression in HeLa whole cell lysates.
2. Immunohistochemical analysis of Beta-NaCH (phospho-Thr615) staining in human brain formalin fixed paraffin embedded tissue section. The section was then incubated with the antibody at room temperature and detected using an HRP conjugated compact polymer system. DAB was used as the chromogen. The section was then counterstained with haematoxylin and mounted with DPX.
3. Immunofluorescent analysis of Beta-NaCH (phospho-Thr615) staining in COS7 cells. Formalin-fixed cells were permeabilized with 0.1% Triton X-100 in TBS for 5-10 minutes and blocked with 3% BSA-PBS for 30 minutes at room temperature. Cells were probed with the primary antibody in 3% BSA-PBS and incubated overnight at 4 C in a hidified chamber. Cells were washed with PBST and incubated with Alexa Fluor 647-conjugated secondary antibody (red) in PBS at room temperature in the dark.

kDa  
140  
100  
80  
60  
40  
20



## A DRUG SCREENING EXPERT

---

Application: IF,IHC,WB

Recommended WB: 1:500-1000; IHC: 1:50-100; IF:1:100-300

---

### Properties

Stability & Storage: Store at -20°C or -80°C for 12 months. Avoid repeated freeze-thaw cycles.

Shipping: Shipping with blue ice.

---

### Antigen Details

Immunogen: KLH conjugated synthetic peptide: encompassing a sequence within the C-term region of human SCNN1B

Antigen Species: Human

Uniprot ID: P51168

Synonyms: p-Beta-NaCH (T615);Beta-NaCH (p-Thr615);Beta-NaCH (p-T615);p-Beta-NaCH (Thr615)

**Inhibitor · Natural Compounds · Compound Libraries · Recombinant Proteins**

This product is for Research Use Only · Not for Human or Veterinary or Therapeutic Use

Tel:781-999-4286 E\_mail:info@targetmol.com Address:34 Washington Street,Wellesley Hills,MA 02481

---