

Anti-Beta-Actin Antibody (1R828)

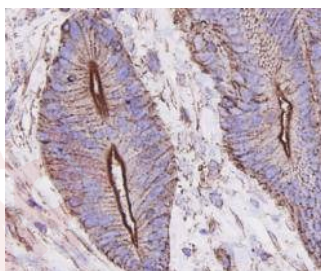
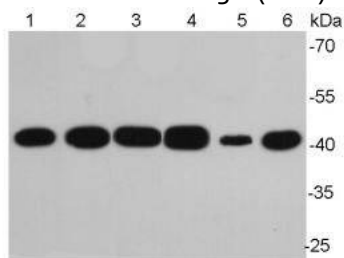
Product Details

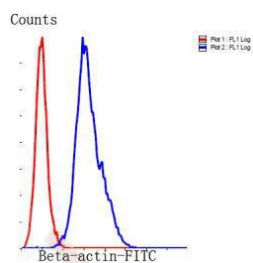
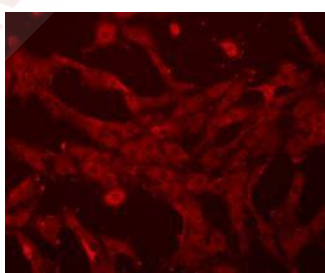
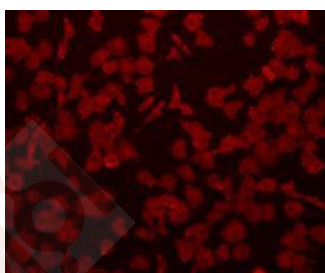
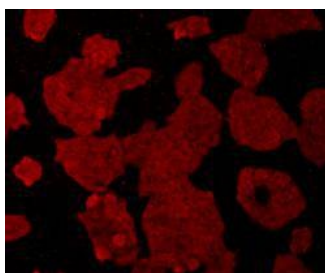
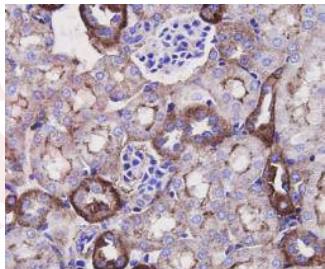
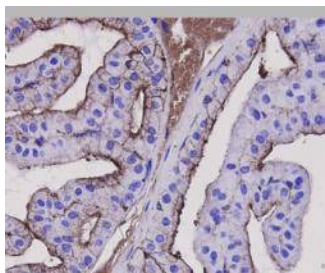
Reactivity:	Human, Mouse, Rat
Conjugation:	Unconjugated
Molecular Weight:	Theoretical: 42 kDa.
Clone:	1R828
Purification:	ProA affinity purified

Applications

1. Western blot analysis of Beta-actin on different lysates using anti-Beta-actin antibody at 1/10,000 dilution. Positive control: Lane 1: NIH/3T3, Lane 2: PC12, Lane 3: MCF-7, Lane 4: HepG2, Lane 5: HeLa, Lane 6: Mouse lung.
2. Immunohistochemical analysis of paraffin-embedded human colon carcinoma tissue using anti-Beta-actin antibody. Counter stained with hematoxylin.
3. Immunohistochemical analysis of paraffin-embedded mouse prostate tissue using anti-Beta-actin antibody. Counter stained with hematoxylin.
4. Immunohistochemical analysis of paraffin-embedded mouse kidney tissue using anti-Beta-actin antibody. Counter stained with hematoxylin.
5. ICC staining of Beta-actin in HeLa cells (red). Cells were fixed in paraformaldehyde, permeabilised with 0.25% Triton X100/PBS.
6. ICC staining of Beta-actin in A549 cells (red). Cells were fixed in paraformaldehyde, permeabilised with 0.25% Triton X100/PBS.
7. ICC staining of Beta-actin in NIH-3T3 cells (red). Cells were fixed in paraformaldehyde, permeabilised with 0.25% Triton X100/PBS.
8. Flow cytometric analysis of HeLa cells with Beta-actin antibody at 1/100 dilution (blue) compared with an unlabelled control (cells without incubation with primary antibody; red). Goat anti mouse IgG (FITC) was used as the secondary antibody.

Verified Activity:





Application: FCM, ICC, IHC, WB

Recommended WB: 1:10000; IHC: 1:100-200; ICC: 1:100-200; FCM: 1:100-200

A DRUG SCREENING EXPERT

Properties

Stability & Storage: Store at -20°C or -80°C for 12 months. Avoid repeated freeze-thaw cycles.

Shipping: Shipping with blue ice.

Antigen Details

Immunogen: KLH conjugated synthetic peptide: within human Beta-actin N terminal

Antigen Species: human

Uniprot ID: P60709

Synonyms: Beta-Actin;β-Actin Protein;ACTB;Actin Cytoplasmic 1;β-actin

Research Background

Beta actin also know as Cytoplasmic Actin is a 42 kDa, highly conserved protein, ubiquitously expressed in all eukaryotic cells. They comprise, along with microtubules, a major component of the cytoskeleton. β-Actin is a relatively stable cytoskeletal protein normally at a constant level in cells, regardless of experimental treatment or technical procedure. For this reason, measurement of β -Actin is generally used as an internal control for experimental error.

Inhibitor · Natural Compounds · Compound Libraries · Recombinant Proteins

This product is for Research Use Only· Not for Human or Veterinary or Therapeutic Use

Tel:781-999-4286 E_mail:info@targetmol.com Address:34 Washington Street,Wellesley Hills,MA 02481