

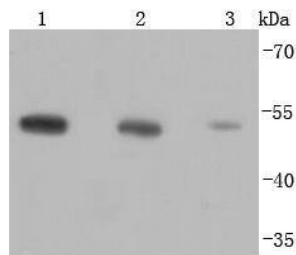
Anti-TUBB Antibody-HRP (4R941)

Product Details

Ig Type:	IgG
Reactivity:	Human,Mouse,Rat
Conjugation:	HRP
Molecular Weight:	Theoretical: 50 kDa.
Clone:	4R941
Purification:	ProA affinity purified

Applications

Verified Activity: 1. Western blot analysis of beta Tubulin on different lysates using anti-beta Tubulin antibody at 1/1,000 dilution. Positive control: Lane 1: HeLa, Lane 2: PC-12, Lane 3: NIH/3T3.



Application:	WB
Recommended	WB: 1:1000-2000

Properties

Stability & Storage:	Store at -20°C or -80°C for 12 months. Avoid repeated freeze-thaw cycles. Keep away from direct sunlight.
Shipping:	Shipping with blue ice.

Antigen Details

Immunogen:	Recombinant Protein
Uniprot ID:	P07437
Synonyms:	Tubulin beta chain;Tubulin beta-5 chain;TUBB;TUBB5

Research Background

Tubulin is a major cytoskeleton component that has five distinct forms, designated α , β , γ , δ and ϵ Tubulin. α and β Tubulins form heterodimers which multimerize to form a microtubule filament. Multiple β Tubulin isoforms ($\beta 1$, $\beta 2$, $\beta 3$, $\beta 4$, $\beta 5$, $\beta 6$ and $\beta 8$) have been characterized and are expressed in mammalian tissues. $\beta 1$ and $\beta 4$ are present throughout the cytosol, $\beta 2$ is present in the nuclei and nucleoplasm, and $\beta 3$ is a neuron-specific cytoskeletal protein. γ Tubulin forms the gammasome, which is required for nucleating microtubule filaments at the centrosome. Both δ Tubulin and ϵ Tubulin are associated with the centrosome. δ Tubulin is a homolog of the Chlamydomonas δ Tubulin Uni3 and is found in association with the centrioles, whereas ϵ Tubulin localizes to the pericentriolar material. ϵ Tubulin exhibits a cell-cycle-specific pattern of localization, first associating with only the older of the centrosomes

in a newly duplicated pair and later associating with both centrosomes.

Inhibitor · Natural Compounds · Compound Libraries · Recombinant Proteins

This product is for Research Use Only · Not for Human or Veterinary or Therapeutic Use

Tel:781-999-4286 E_mail:info@targetmol.com Address:34 Washington Street,Wellesley Hills,MA 02481