

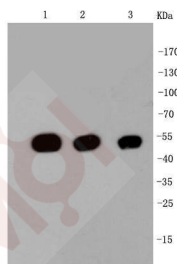
Anti-TUBB Antibody (7E2)

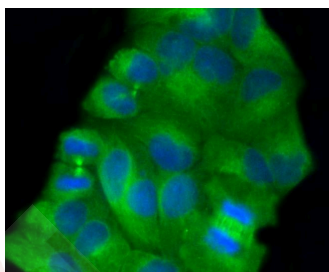
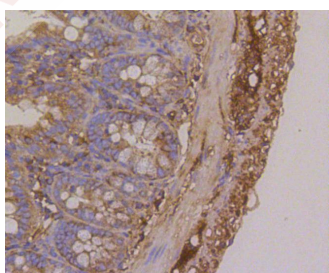
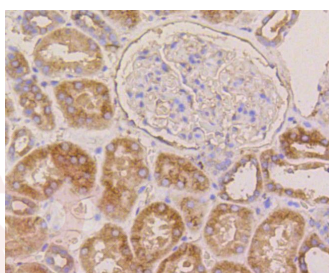
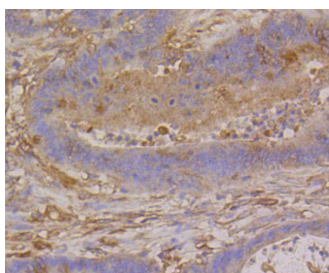
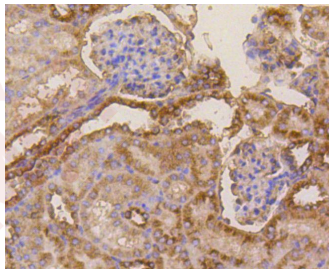
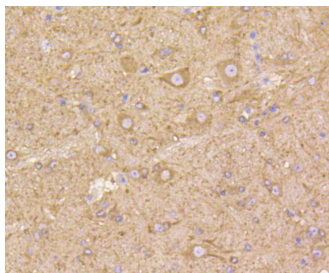
Product Details

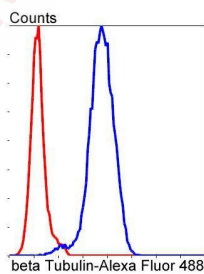
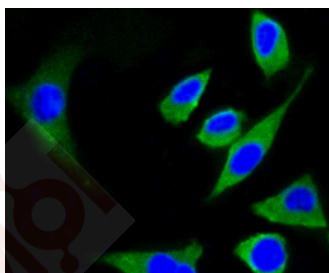
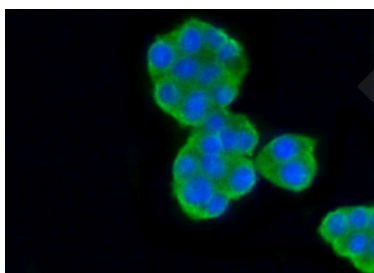
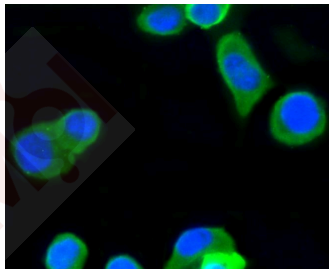
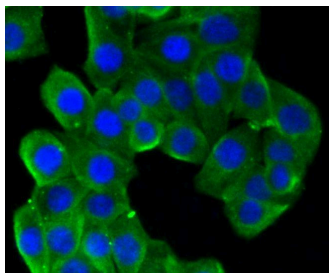
Ig Type:	IgG
Reactivity:	Human,Mouse,Rat
Conjugation:	Unconjugated
Molecular Weight:	Theoretical: 50 kDa.
Clone:	7E2
Purification:	ProA affinity purified

Applications

1. Western blot analysis of beta Tubulin on different cell lysates using anti-beta Tubulin antibody at 1/1,000 dilution. Positive control: Lane 1: Hela, Lane 2: NIH/3T3, Lane 3: PC12.
 2. Immunohistochemical analysis of paraffin-embedded mouse brain tissue using anti-beta Tubulin antibody. Counter stained with hematoxylin.
 3. Immunohistochemical analysis of paraffin-embedded mouse kidney tissue using anti-beta Tubulin antibody. Counter stained with hematoxylin.
 4. Immunohistochemical analysis of paraffin-embedded human colon cancer tissue using anti-beta Tubulin antibody. Counter stained with hematoxylin.
 5. Immunohistochemical analysis of paraffin-embedded human kidney tissue using anti-beta Tubulin antibody. Counter stained with hematoxylin.
 6. Immunohistochemical analysis of paraffin-embedded mouse colon tissue using anti-beta Tubulin antibody. Counter stained with hematoxylin.
- Verified Activity:
7. ICC staining beta Tubulin in Hela cells (green). The nuclear counter stain is DAPI (blue). Cells were fixed in paraformaldehyde, permeabilised with 0.25% Triton X100/PBS.
 8. ICC staining beta Tubulin in CRC cells (green). The nuclear counter stain is DAPI (blue). Cells were fixed in paraformaldehyde, permeabilised with 0.25% Triton X100/PBS.
 9. ICC staining beta Tubulin in N2A cells (green). Cells were fixed in paraformaldehyde, permeabilised with 0.25% Triton X100/PBS.
 10. ICC staining beta Tubulin in PC12 cells (green). Cells were fixed in paraformaldehyde, permeabilised with 0.25% Triton X100/PBS.
 11. ICC staining beta Tubulin in SH-SY-5Y cells (green). Cells were fixed in paraformaldehyde, permeabilised with 0.25% Triton X100/PBS.
 12. Flow cytometric analysis of NIH/3T3 cells with beta Tubulin antibody at 1/50 dilution (blue) compared with an unlabelled control (cells without incubation with primary antibody; red). Alexa Fluor 488-conjugated goat anti rabbit IgG was used as the secondary antibody.







Application: FCM,ICC,IHC,WB

Recommended WB: 1:1000-5000; IHC: 1:50-200; ICC: 1:50-200; FCM: 1:10-100

Properties

Stability & Storage: Store at -20°C or -80°C for 12 months. Avoid repeated freeze-thaw cycles.

Shipping: Shipping with blue ice.

Antigen Details

Immunogen: Recombinant Protein
Uniprot ID: P07437
Synonyms: Tubulin beta-5 chain;TUBB;TUBB5;Tubulin beta chain

Research Background

Tubulin is one of several members of a small family of globular proteins. The most common members of the tubulin family are α -tubulin and β -tubulin. The beta-tubulin (relative molecular weight about 50 kDa) is counterpart of alpha-tubulin in tubulin heterodimer, it is coded by multiple tubulin genes and it is also posttranslationally modified. Heterogeneity of subunit is concentrated in C-terminal structural domain. Beta-Tubulin may have bound GTP or GDP. Under certain conditions β -tubulin can hydrolyze its bound GTP to GDP plus Pi, release the Pi, and exchange the GDP for GTP.

Inhibitor · Natural Compounds · Compound Libraries · Recombinant Proteins

This product is for Research Use Only · Not for Human or Veterinary or Therapeutic Use

Tel:781-999-4286 E_mail:info@targetmol.com Address:34 Washington Street,Wellesley Hills,MA 02481