

## Anti-Beta-Actin Antibody-HRP (4B231)

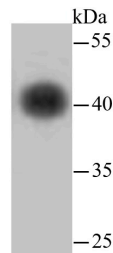
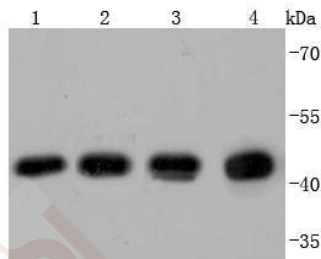
### Product Details

Ig Type:	IgG
Reactivity:	Human,Mouse,Rat,Monkey,Hamouseter,Plant,zebrafish
Conjugation:	HRP
Molecular Weight:	Theoretical: 42 kDa.
Clone:	4B231
Purification:	ProA affinity purified

### Applications

#### Verified Activity:

1. Western blot analysis of beta Actin on different lysates using anti-beta Actin antibody at 1/1,000 dilution. Positive control: Lane 1: Hela, Lane 2: PC-12, Lane 3: NIH/3T3, Lane 4: zebrafish.
2. Western blot analysis of beta Actin on hybrid fish (crucian-carp) brain tissue lysate using anti-beta Actin antibody at 1/500 dilution.



Application:	WB
Recommended	WB: 1:1000-2000

### Properties

Stability & Storage:	Store at -20°C or -80°C for 12 months. Avoid repeated freeze-thaw cycles. Keep away from direct sunlight.
Shipping:	Shipping with blue ice.

### Antigen Details

Immunogen: Recombinant Protein  
Uniprot ID: P60709  
Synonyms:  $\beta$ -actin; Actin Cytoplasmic 1;  $\beta$ -Actin Protein; ACTB; Beta-Actin

---

### Research Background

All eukaryotic cells express Actin, which often constitutes as much as 50% of total cellular protein. Actin filaments can form both stable and labile structures and are crucial components of microvilli and the contractile apparatus of muscle cells. While lower eukaryotes, such as yeast, have only one Actin gene, higher eukaryotes have several isoforms encoded by a family of genes. At least six types of Actin are present in mammalian tissues and fall into three classes.  $\alpha$ -Actin expression is limited to various types of muscle, whereas  $\beta$ -Actin and  $\gamma$ -Actin are the principle constituents of filaments in other tissues. Members of the small GTPase family regulate the organization of the Actin cytoskeleton. Rho controls the assembly of Actin stress fibers and focal adhesion. Rac regulates Actin filament accumulation at the plasma membrane. Cdc42 stimulates formation of filopodia.

**Inhibitor · Natural Compounds · Compound Libraries · Recombinant Proteins**

This product is for Research Use Only · Not for Human or Veterinary or Therapeutic Use

Tel: 781-999-4286 E\_mail: info@targetmol.com Address: 34 Washington Street, Wellesley Hills, MA 02481