

Anti-beta II Tubulin Antibody (5R171)

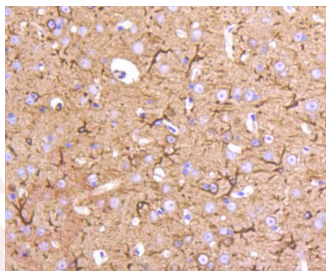
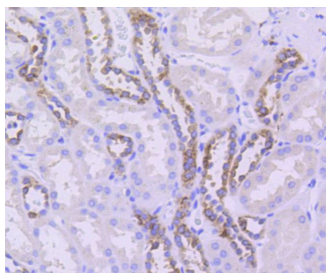
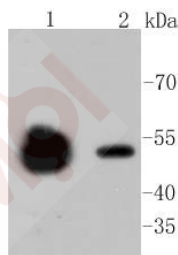
Product Details

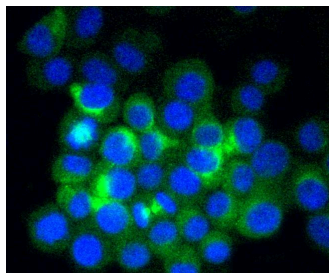
Ig Type:	IgG
Reactivity:	Human,Mouse,Rat
Conjugation:	Unconjugated
Molecular Weight:	Theoretical: 50 kDa.
Clone:	5R171
Purification:	ProA affinity purified

Applications

Verified Activity:

1. Western blot analysis of beta II Tubulin on different lysates using anti-beta II Tubulin antibody at 1/1,000 dilution. Positive control: Lane 1: Mouse brain, Lane 2: Mouse kidney.
2. Immunohistochemical analysis of paraffin-embedded human kidney tissue using anti-beta II Tubulin antibody. Counter stained with hematoxylin.
3. Immunohistochemical analysis of paraffin-embedded mouse brain tissue using anti-beta II Tubulin antibody. Counter stained with hematoxylin.
4. ICC staining beta II Tubulin in N2A cells (green). The nuclear counter stain is DAPI (blue). Cells were fixed in paraformaldehyde, permeabilised with 0.25% Triton X100/PBS.





Application: ICC/IF,IHC,IP,WB

Recommended WB: 1:1000-5000; IHC: 1:50-200; ICC/IF: 1:50-200

Properties

Stability & Storage: Store at -20°C or -80°C for 12 months. Avoid repeated freeze-thaw cycles.

Shipping: Shipping with blue ice.

Antigen Details

Immunogen: Recombinant Protein

Uniprot ID: P68371

Synonyms: TUBB2A;TUBB 2C;Tubulin beta-2C chain;TUBB2C;Tubulin beta 2B chain;Tubulin beta polypeptide;TUBB2B;Tubulin beta polypeptide paralog;Tubulin beta 2 chain;TUBB PARALOG; DKFZp566F223;beta II Tubulin;Tubulin beta 2;OTTHUMP00000015964;tubulin, beta 2A class IIa; M(beta)2;TUBB2;Tubb4b;Tubulin beta polypeptide 2;bA506K6.1;class II beta tubulin isotype; β II Tubulin;Tubulin beta 2A;Tubulin, beta-4B;TBB4B_HUMAN;Tubulin beta 2B;b II Tubulin; tubulin, beta 2B class IIb;OTTHUMP00000015956;Beta2;dj40E16.7;b II Tubulin;class IIb beta-tubulin;MGC8685;class IIa beta-tubulin;FLJ98847;TUBB 2;Tubulin beta-4B chain;tubulin, beta 4B class IVb;Tubulin beta-2 chain;TUBB 2A;Tubulin, beta, class IVB; β II Tubulin;Tubulin beta 2C;Class IVb beta tubulin;Tubulin beta 2A chain;TUBB

Research Background

Tubulin is a major cytoskeleton component that has five distinct forms, designated a, b, g, d and e tubulin. a and b tubulins form heterodimers which multimerize to form a microtubule filament. Multiple b Tubulin isoforms (b1, b2, b3, b4, b5, b6 and b8) have been characterized and are expressed in mammalian tissues. b1 and b4 are present throughout the cytosol, b2 is present in the nuclei and nucleoplasm, and b3 is a neuron-specific cytoskeletal protein. g Tubulin forms the gammasome, which is required for nucleating microtubule filaments at the centrosome. Both d Tubulin and e Tubulin are associated with the centrosome. d Tubulin is a homolog of the Chlamydomonas d Tubulin Uni3 and is found in association with the centrioles, whereas e Tubulin localizes to the pericentriolar material. e Tubulin exhibits a cell cycle-specific pattern of localization; first associating with only the older of the centrosomes in a newly duplicated pair, and later associating with both centrosomes.

Inhibitor · Natural Compounds · Compound Libraries · Recombinant Proteins

This product is for Research Use Only · Not for Human or Veterinary or Therapeutic Use

Tel:781-999-4286 E_mail:info@targetmol.com Address:34 Washington Street,Wellesley Hills,MA 02481