

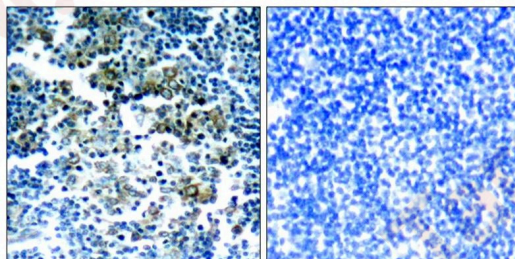
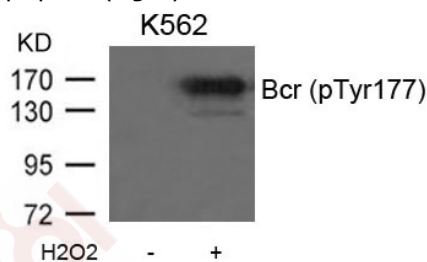
## Anti-Phospho-Bcr (Tyr177) Polyclonal Antibody

### Product Details

Ig Type:	IgG
Reactivity:	Human,Mouse
Conjugation:	Unconjugated
Purification:	Antibodies were produced by immunizing rabbits with synthetic phosphopeptide and KLH conjugates. Antibodies were purified by affinity-chromatography using epitope-specific phosphopeptide. Non-phospho specific antibodies were removed by chromatography using non-phosphopeptide.

### Applications

- Verified Activity:
- Western blot analysis of extracts from K562 cells untreated or treated with H<sub>2</sub>O<sub>2</sub> using Bcr (Phospho-Tyr177) Antibody TMAC-00410.
  - Immunohistochemical analysis of paraffin-embedded human tonsil tumor tissue using Bcr (Phospho-Tyr177) Antibody TMAC-00410(left) or the same antibody preincubated with blocking peptide(right).



Application: IHC,WB

### Properties

Stability & Storage:	Store at 2°C-8°C for 1 month. Store at -20°C or -80°C for 12 months. Avoid repeated freeze-thaw cycles.
Shipping:	Shipping with blue ice.

### Antigen Details

Immunogen: Peptide sequence around phosphorylation site of tyrosine 177 (P-F-Y(p)-V-N) derived from Human Bcr

Antigen Species: human

Uniprot ID: P11274

Synonyms: p-Bcr (Tyr177);Bcr (p-Tyr177);p-Bcr (Y177);Bcr (p-Y177)

---

### Research Background

GTPase-activating protein for RAC1 and CDC42. Promotes the exchange of RAC or CDC42-bound GDP by GTP, thereby activating them. Displays serine/threonine kinase activity.

**Inhibitor · Natural Compounds · Compound Libraries · Recombinant Proteins**

This product is for Research Use Only · Not for Human or Veterinary or Therapeutic Use

Tel:781-999-4286 E\_mail:info@targetmol.com Address:34 Washington Street,Wellesley Hills,MA 02481