

Anti-Phospho-BCL-XL (Ser62) Polyclonal Antibody 2

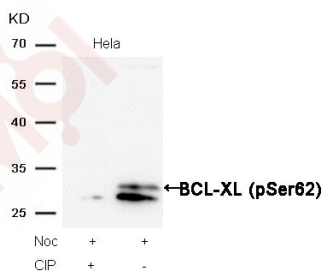
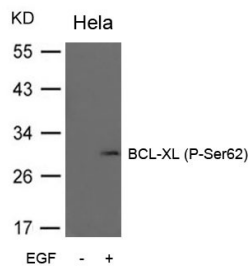
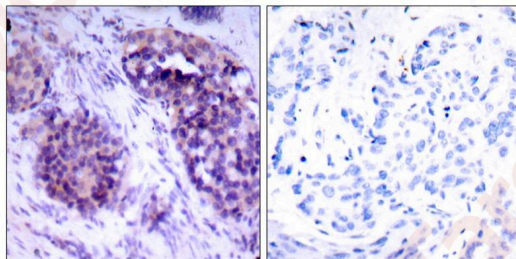
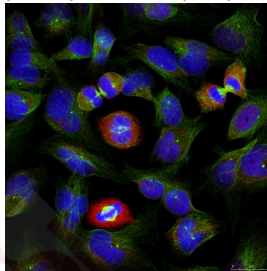
Product Details

Ig Type:	IgG
Reactivity:	Human,Mouse,Rat
Conjugation:	Unconjugated

Applications

Verified Activity:

1. Immunofluorescence staining of methanol-fixed HeLa cells using BCL-XL (phospho-Ser62) antibody (TMAC-00408, Red).
2. Immunohistochemical analysis of paraffin-embedded human breast carcinoma tissue using BCL-XL (phospho-Ser62) antibody (TMAC-00408).
3. Western blot analysis of extracts from Hela cells untreated or treated with EGF using BCL-XL (Phospho-Ser62) Antibody TMAC-00408.
4. Western blot analysis of extracts from Hela cells, treated with Noc or calf intestinal phosphatase (CIP), using BCL-XL (Phospho-Ser62) Antibody TMAC-00408.



A DRUG SCREENING EXPERT

Application: IF,IHC,WB

Properties

Shipping: Shipping with blue ice.

Antigen Details

Uniprot ID: Q07817

Synonyms: p-BCL-XL (Ser62);p-BCL-XL (S62);BCL-XL (p-Ser62);BCL-XL (p-S62)

Inhibitor · Natural Compounds · Compound Libraries · Recombinant Proteins

This product is for Research Use Only· Not for Human or Veterinary or Therapeutic Use

Tel:781-999-4286 E_mail:info@targetmol.com Address:34 Washington Street,Wellesley Hills,MA 02481