

Anti-BCL-XL Antibody (3K493)

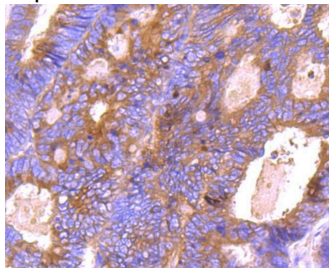
Product Details

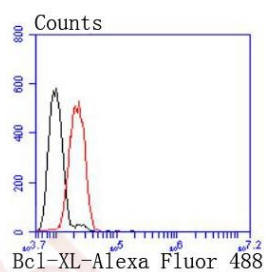
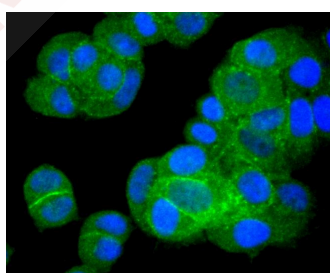
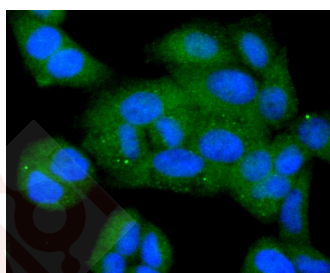
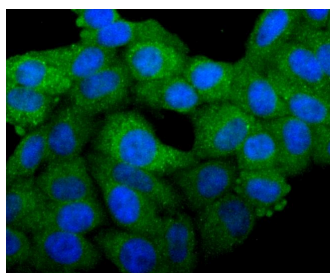
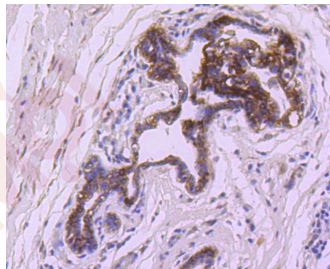
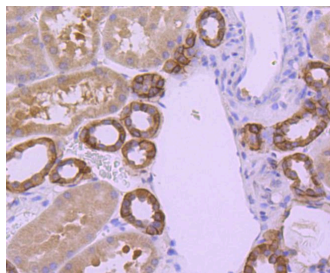
Ig Type:	IgG
Reactivity:	Human,Mouse,Rat
Conjugation:	Unconjugated
Molecular Weight:	Theoretical: 26 kDa.
Clone:	3K493
Purification:	ProA affinity purified

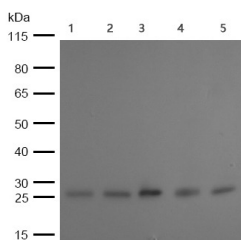
Applications

Verified Activity:

1. Immunohistochemical analysis of paraffin-embedded human colon cancer tissue using anti-Bcl-XL antibody. Counter stained with hematoxylin.
2. Immunohistochemical analysis of paraffin-embedded human kidney tissue using anti-Bcl-XL antibody. Counter stained with hematoxylin.
3. Immunohistochemical analysis of paraffin-embedded human breast carcinoma tissue using anti-Bcl-XL antibody. Counter stained with hematoxylin.
4. ICC staining Bcl-XL in HepG2 cells (green). The nuclear counter stain is DAPI (blue). Cells were fixed in paraformaldehyde, permeabilised with 0.25% Triton X100/PBS.
5. ICC staining Bcl-XL in Hela cells (green). The nuclear counter stain is DAPI (blue). Cells were fixed in paraformaldehyde, permeabilised with 0.25% Triton X100/PBS.
6. ICC staining Bcl-XL in MCF-7 cells (green). The nuclear counter stain is DAPI (blue). Cells were fixed in paraformaldehyde, permeabilised with 0.25% Triton X100/PBS.
7. Flow cytometric analysis of Hela cells with Bcl-XL antibody at 1/50 dilution (red) compared with an unlabelled control (cells without incubation with primary antibody; black). Alexa Fluor 488-conjugated goat anti rabbit IgG was used as the secondary antibody.
8. All lanes: Bcl-XL Rabbit mAb TMAC-00407 at 1/1000 dilution, Lane 1: Hela whole cell lysates, Lane 2: JK whole cell lysates, Lane 3: 3T3 whole cell lysates, Lane 4: C6 whole cell lysates, Lane 5: HepG2 whole cell lysates Lysates at 20 µg per lane. Secondary All lanes: Goat Anti-Rabbit IgG H&L (HRP) at 1/10000 dilution, Predicted band size: 26 kDa, Observed band size: 26 kDa, Exposure time: 2 seconds.







Application: FCM,ICC/IF,IHC,IP,WB

Recommended WB: 1:1000; IHC: 1:50-200; ICC/IF: 1:50-200; FCM: 1:50-100

Properties

Stability & Storage: Store at -20°C or -80°C for 12 months. Avoid repeated freeze-thaw cycles.

Shipping: Shipping with blue ice.

Antigen Details

Immunogen: Recombinant Protein

Uniprot ID: Q07817

Synonyms: bcl-xL;BCLXS;BCLXL;BCL2L;Bcl-X;BCL2-like 1;BCLX;bcl-xS;PPP1R52;BCL-XL/S

Research Background

The Bcl-2 gene was isolated at the chromosomal breakpoint of t(14;18) bearing follicular B cell lymphomas. Bcl-2 blocks cell death following a variety of stimuli and confers a death-sparing effect to certain hematopoietic cell lines following growth factor withdrawal. A second protein, designated Bcl-associated X protein (Bax) p21, has extensive amino acid homology with Bcl-2 and both homodimerizes and heterodimerizes with Bcl-2. Overexpression of Bax accelerates apoptotic death induced by cytokine deprivation in an IL-3-dependent cell line, and Bax also counters the death repressor activity of Bcl-2. Bcl-x, one of several additional proteins with sequence homology to Bcl-2, is expressed as Bcl-xL, a 233 amino acid protein with 43% sequence identity with Bcl-2 that suppresses cell death, and Bcl-xS, a shorter variant that is 178 amino acids in length and lacks a 63 amino acid region (amino acids 126-188) found in Bcl-xL and which functions as a dominant inhibitor of Bcl-2. A further apoptosis-inducing protein, Bad, dimerizes both with Bcl-xL and to a lesser extent with Bcl-2, thus displacing Bax and inducing apoptosis.

Inhibitor · Natural Compounds · Compound Libraries · Recombinant Proteins

This product is for Research Use Only · Not for Human or Veterinary or Therapeutic Use

Tel:781-999-4286 E_mail:info@targetmol.com Address:34 Washington Street,Wellesley Hills,MA 02481
