

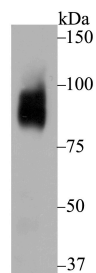
## Anti-BCL6 Antibody (4B197)

## Product Details

Ig Type:	IgG
Reactivity:	Human,Mouse
Conjugation:	Unconjugated
Molecular Weight:	Theoretical: 79 kDa.
Clone:	4B197
Purification:	ProA affinity purified

## Applications

Verified Activity: 1. Western blot analysis of Bcl-6 on NIH-3T3 cell lysate using anti-Bcl-6 antibody at 1/500 dilution.



Application:	WB
Recommended	WB: 1:1000-5000

## Properties

Stability & Storage: Store at -20°C or -80°C for 12 months. Avoid repeated freeze-thaw cycles.  
Shipping: Shipping with blue ice.

## Antigen Details

Immunogen:	Recombinant Protein
Uniprot ID:	P41182
Synonyms:	ZNF51;B-cell CLL/lymphoma 6;BCL5;ZBTB27;BCL6A;LAZ3

## Research Background

Bcl-6, a transcriptional repressor, binds Stat recognition-like DNA elements and influences germinal center development and Th1/Th2 differentiation. Bcl-6 negatively regulates NFκB expression, thereby inhibiting NFκB-mediated cellular functions. HDAC- and silent information regulator (SIR)-2-dependent acetylation of Bcl-6 causes downregulation of activity by inhibiting the ability of Bcl-6 to recruit complexes containing histone deacetylases (HDACs). Bcl-6 is frequently deregulated in non-Hodgkin's B cell lymphomas. The human BCL6 gene has been shown to encode a protein of 706 amino acids.

**Inhibitor · Natural Compounds · Compound Libraries · Recombinant Proteins**

This product is for Research Use Only · Not for Human or Veterinary or Therapeutic Use

Tel:781-999-4286 E\_mail:info@targetmol.com Address:34 Washington Street,Wellesley Hills,MA 02481