

Anti-Phospho-BCL6 (Ser333) Polyclonal Antibody

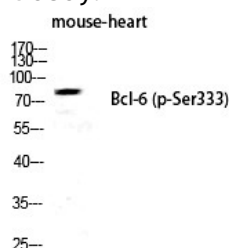
Product Details

Ig Type:	IgG
Reactivity:	Human,Mouse,Rat
Conjugation:	Unconjugated
Molecular Weight:	Actual: 79 kDa.
Purification:	The antibody was affinity-purified from rabbit antiserum by affinity-chromatography using epitope-specific immunogen.

Applications

Verified Activity:

1. Western Blot analysis of MOUSE-HEART cells using Phospho-Bcl-6 (S333) Polyclonal Antibody.



Application:	ELISA,WB
Recommended	WB: 1:500-2000; ELISA: 1:5000

Properties

Stability & Storage:	Store at -20°C or -80°C for 12 months. Avoid repeated freeze-thaw cycles.
Shipping:	Shipping with blue ice.

Antigen Details

Immunogen:	A synthesized phosphopeptide: human Bcl-6 around the phosphorylation site of S333
Antigen Species:	human
Uniprot ID:	P41182
Synonyms:	BCL6 (p-S333);BCL6 (p-Ser333);p-BCL6 (S333);p-BCL6 (Ser333)

Inhibitor · Natural Compounds · Compound Libraries · Recombinant Proteins

This product is for Research Use Only. Not for Human or Veterinary or Therapeutic Use

Tel:781-999-4286 E_mail:info@targetmol.com Address:34 Washington Street,Wellesley Hills,MA 02481