

## Anti-BCL2A1 Antibody (5Q732)

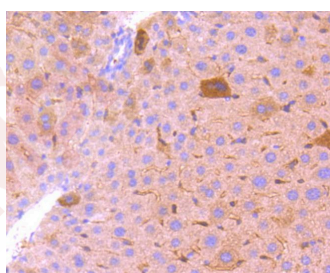
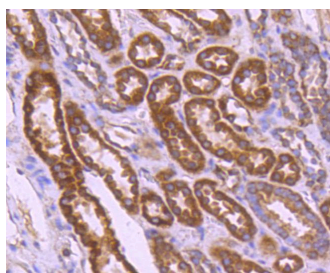
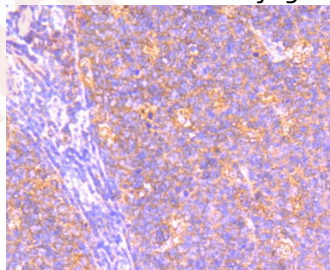
### Product Details

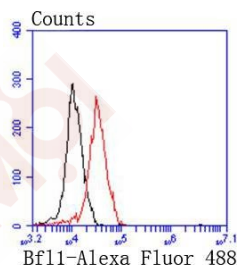
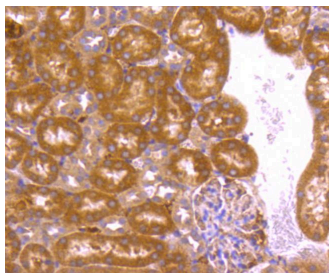
Ig Type:	IgG
Reactivity:	Human,Mouse,Rat
Conjugation:	Unconjugated
Molecular Weight:	Theoretical: 20 kDa.
Clone:	5Q732
Purification:	ProA affinity purified

### Applications

#### Verified Activity:

1. Immunohistochemical analysis of paraffin-embedded human tonsil tissue using anti-BCL2A1 antibody. Counter stained with hematoxylin.
2. Immunohistochemical analysis of paraffin-embedded human kidney tissue using anti-BCL2A1 antibody. Counter stained with hematoxylin.
3. Immunohistochemical analysis of paraffin-embedded mouse liver tissue using anti- BCL2A1 antibody. Counter stained with hematoxylin.
4. Immunohistochemical analysis of paraffin-embedded mouse kidney tissue using anti-BCL2A1 antibody. Counter stained with hematoxylin.
5. Flow cytometric analysis of 293 cells with Bfl1(BCL2A1) antibody at 1/50 dilution (red) compared with an unlabelled control (cells without incubation with primary antibody; black). Alexa Fluor 488-conjugated goat anti rabbit IgG was used as the secondary antibody.





Application: FCM,IHC,WB  
Recommended WB: 1:1000; IHC: 1:50-200; FCM: 1:50-100

## Properties

Stability & Storage: Store at -20°C or -80°C for 12 months. Avoid repeated freeze-thaw cycles.  
Shipping: Shipping with blue ice.

## Antigen Details

Immunogen: Recombinant Protein  
Uniprot ID: Q16548  
Synonyms: BCL2L5;ACC-1;BFL1;HBPA1;GRS;BCL2 related protein A1;ACC-2;ACC1;ACC2

## Research Background

The Bcl-2 family of proteins is characterized by its ability to modulate cell death under a broad range of physiological conditions. Bcl-2 and Bcl-xL function to inhibit apoptosis while other members of the Bcl-2 family, Bax, Bad, Bak and Bcl-xS, oppose death-suppressing effects. An additional member of the family, A1 (also designated Bfl-1), dimerizes with both Bcl-2 and Bax and has been identified as a hematopoietic-specific, early inducible gene. While A1 demonstrates life promoting properties similar to those of Bcl-2, its function may be more temporally regulated during myeloid differentiation and dependent on additional growth stimuli to confer its life promoting properties. A1 is abundantly expressed in bone marrow and at low levels in other tissues. There is evidence that a correlation exists between a high expression of the A1 gene product and stomach cancer.

**Inhibitor · Natural Compounds · Compound Libraries · Recombinant Proteins**

This product is for Research Use Only · Not for Human or Veterinary or Therapeutic Use

Tel:781-999-4286 E\_mail:info@targetmol.com Address:34 Washington Street,Wellesley Hills,MA 02481