

Anti-BCL2 Antibody (4G452)

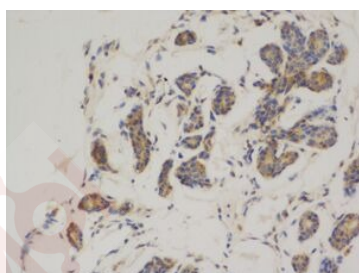
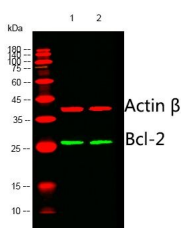
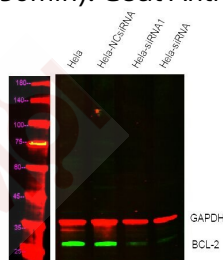
Product Details

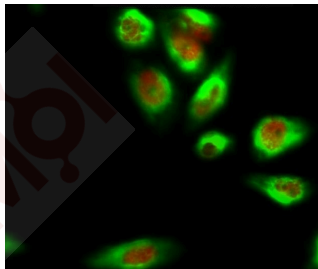
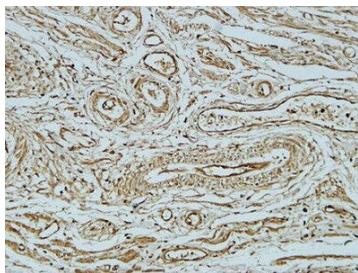
Reactivity:	Human, Mouse, Rat
Conjugation:	Unconjugated
Molecular Weight:	Actual: 26 kDa.
Clone:	4G452
Purification:	The antibody was affinity-purified from mouse ascites by affinity-chromatography using specific immunogen.

Applications

1. Western blot analysis of lysates from 1)Hela cell , 2)Hela cells knockdown by siRNA1.
2. Western blot analysis of lysates from 1)Hela, 2) MCF-7 cells, (Green) primary antibody was diluted at 1:1000.
3. Immunohistochemical analysis of paraffin-embedded Human breast cancer.
4. Immunohistochemical analysis of paraffin-embedded Human Fallopian tube.
5. Immunofluorescence analysis of Hela cell. 1, Dnmt3b Polyclonal Antibody (red) was diluted at 1:200 (4°C overnight). Bcl-2 Monoclonal Antibody (6B5) (green) was diluted at 1:200 (4°C overnight). 2, Goat Anti Rabbit Alexa Fluor 594 was diluted at 1:1000 (room temperature, 50min). Goat Anti Mouse Alexa Fluor 488 was diluted at 1:1000 (room temperature, 50min).

Verified Activity:





Application: ICC/IF,IHC,WB

Recommended WB: 1:1000-2000; IHC: 1:200; ICC/IF: 1:50-200

Properties

Stability & Storage: Store at -20°C or -80°C for 12 months. Avoid repeated freeze-thaw cycles.

Shipping: Shipping with blue ice.

Antigen Details

Immunogen: A synthesized peptide: human Bcl-2

Antigen Species: human

Uniprot ID: P10415

Synonyms: Bcl-2;PPP1R50;B-cell CLL/lymphoma 2

Inhibitor · Natural Compounds · Compound Libraries · Recombinant Proteins

This product is for Research Use Only · Not for Human or Veterinary or Therapeutic Use

Tel:781-999-4286 E_mail:info@targetmol.com Address:34 Washington Street,Wellesley Hills,MA 02481
