

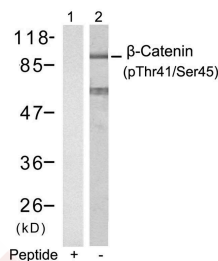
Anti-Phospho-CTNNB1 (Thr41, Ser45) Polyclonal Antibody

Product Details

Ig Type:	IgG
Reactivity:	Human,Mouse,Rat
Conjugation:	Unconjugated
Purification:	Antibodies were produced by immunizing rabbits with synthetic phosphopeptide and KLH conjugates. Antibodies were purified by affinity-chromatography using epitope-specific phosphopeptide. Non-phospho specific antibodies were removed by chromatography using non-phosphopeptide.

Applications

Verified Activity: 1. Western blot analysis of extracts from SW626 cells using b-Catenin (Phospho-Thr41/Ser45) Antibody TMAC-00386 (Lane 2) and the same antibody preincubated with blocking peptide (Lane1).



Application: WB

Properties

Stability & Storage: Store at 2°C-8°C for 1 month. Store at -20°C or -80°C for 12 months. Avoid repeated freeze-thaw cycles.

Shipping: Shipping with blue ice.

Antigen Details

Immunogen: Peptide sequence around phosphorylation site of threonine 41/serine 45 (A-T-T(p)-T-A-P-S(p)-L-S) derived from Human b-Catenin

Antigen Species: human

Uniprot ID: P35222

Synonyms: CTNNB1 (p-T41, S45);p-CTNNB1 (Thr41, Ser45);CTNNB1 (p-Thr41, Ser45);p-CTNNB1 (T41, S45)

Research Background

Involved in the regulation of cell adhesion and in signal transduction through the Wnt pathway.

Inhibitor · Natural Compounds · Compound Libraries · Recombinant Proteins

This product is for Research Use Only · Not for Human or Veterinary or Therapeutic Use

Tel:781-999-4286 E_mail:info@targetmol.com Address:34 Washington Street,Wellesley Hills,MA 02481