

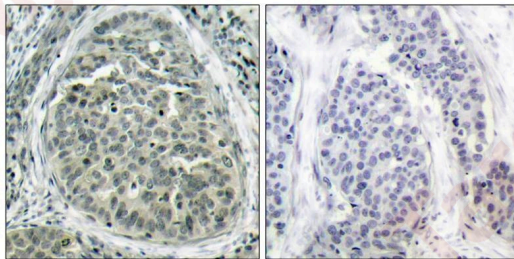
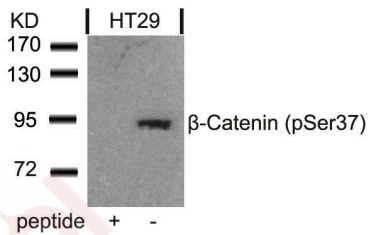
Anti-Phospho-CTNNB1 (Ser37) Polyclonal Antibody 2

Product Details

| | |
|---------------|--|
| Ig Type: | IgG |
| Reactivity: | Human,Mouse,Rat |
| Conjugation: | Unconjugated |
| Purification: | Antibodies were produced by immunizing rabbits with synthetic phosphopeptide and KLH conjugates. Antibodies were purified by affinity-chromatography using epitope-specific phosphopeptide. Non-phospho specific antibodies were removed by chromatography using non-phosphopeptide. |

Applications

- Verified Activity:
- Western blot analysis of extracts from HT29 cells using b-Catenin (Phospho-Ser37) Antibody TMAC-00385 and the same antibody preincubated with blocking peptide.
 - Immunohistochemical analysis of paraffin-embedded human breast carcinoma tissue using b-Catenin (Phospho-Ser37) Antibody TMAC-00385 (left) or the same antibody preincubated with blocking peptide (right).



Application: IHC,WB

Properties

| | |
|----------------------|---|
| Stability & Storage: | Store at 2°C-8°C for 1 month. Store at -20°C or -80°C for 12 months. Avoid repeated freeze-thaw cycles. |
| Shipping: | Shipping with blue ice. |

Antigen Details

Immunogen: Peptide sequence around phosphorylation site of serine 37 (I-H-S(p)-G-A) derived from Human b-Catenin

Antigen Species: human

Uniprot ID: P35222

Synonyms: p-CTNNB1 (S37);CTNNB1 (p-Ser37);p-CTNNB1 (Ser37);CTNNB1 (p-S37)

Research Background

Involved in the regulation of cell adhesion and in signal transduction through the Wnt pathway.

Inhibitor · Natural Compounds · Compound Libraries · Recombinant Proteins

This product is for Research Use Only · Not for Human or Veterinary or Therapeutic Use

Tel:781-999-4286 E_mail:info@targetmol.com Address:34 Washington Street,Wellesley Hills,MA 02481