

Anti-BCAP31 Antibody (4P206)

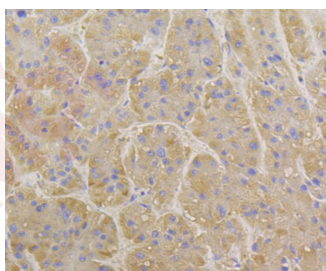
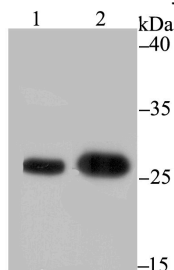
Product Details

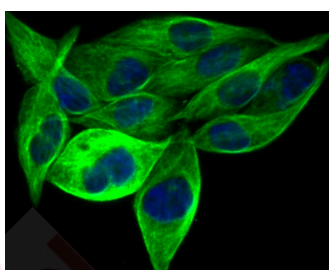
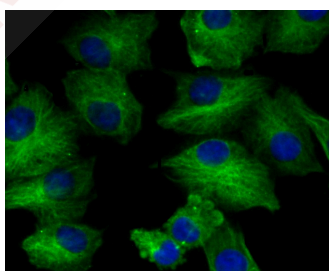
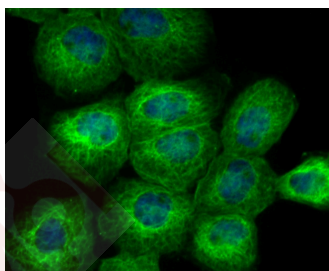
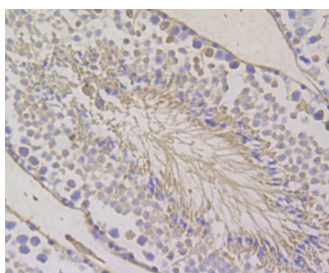
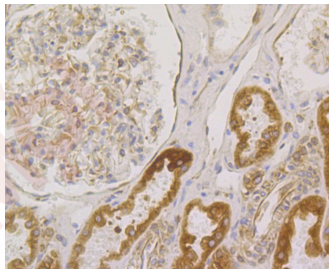
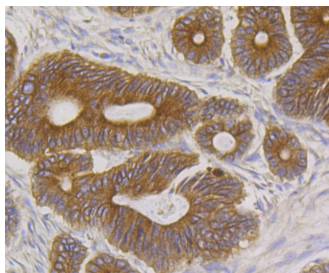
Ig Type:	IgG
Reactivity:	Human,Mouse
Conjugation:	Unconjugated
Molecular Weight:	Theoretical: 28 kDa.
Clone:	4P206
Purification:	ProA affinity purified

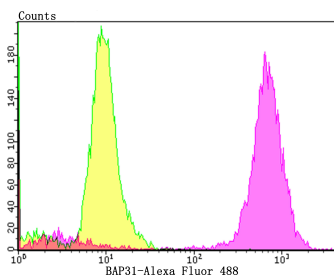
Applications

1. Western blot analysis of BAP31 on different lysates using anti-BAP31 antibody at 1/1,000 dilution. Positive control: Lane 1: A431, Lane 2: SK-Br-3.
2. Immunohistochemical analysis of paraffin-embedded human liver tissue using anti-BAP31 antibody. Counter stained with hematoxylin.
3. Immunohistochemical analysis of paraffin-embedded human colon cancer tissue using anti-BAP31 antibody. Counter stained with hematoxylin.
4. Immunohistochemical analysis of paraffin-embedded human kidney tissue using anti-BAP31 antibody. Counter stained with hematoxylin.
5. Immunohistochemical analysis of paraffin-embedded mouse testis tissue using anti-BAP31 antibody. Counter stained with hematoxylin.
6. ICC staining BAP31 in A431 cells (green). The nuclear counter stain is DAPI (blue). Cells were fixed in paraformaldehyde, permeabilised with 0.25% Triton X100/PBS.
7. ICC staining BAP31 in A549 cells (green). The nuclear counter stain is DAPI (blue). Cells were fixed in paraformaldehyde, permeabilised with 0.25% Triton X100/PBS.
8. ICC staining BAP31 in PC-3M cells (green). The nuclear counter stain is DAPI (blue). Cells were fixed in paraformaldehyde, permeabilised with 0.25% Triton X100/PBS.
9. Flow cytometric analysis of PC-3M cells with BAP31 antibody at 1/100 dilution (purple) compared with an unlabelled control (cells without incubation with primary antibody; yellow). Alexa Fluor 488-conjugated goat anti-rabbit IgG was used as the secondary antibody.

Verified Activity:







Application: FCM,ICC,IF,IHC,WB

Recommended WB: 1:500-2000; IHC: 1:50-200; ICC: 1:50-200; FCM: 1:50-100

Properties

Stability & Storage: Store at -20°C or -80°C for 12 months. Avoid repeated freeze-thaw cycles.

Shipping: Shipping with blue ice.

Antigen Details

Immunogen: A synthesized peptide: within the C-terminus of human BAP31

Antigen Species: human

Uniprot ID: P51572

Synonyms: p28;Protein CDM;BCR-associated protein 31;DXS1357E;BCAP 31;Bap31;B-cell receptor-associated protein 31;6C6-AG tumor-associated antigen

Research Background

BAP31, a human Bcl-2-interacting protein, is an integral membrane protein that is a component of a protein complex in the endoplasmic reticulum. This protein complex mechanically bridges an apoptosis-initiating caspase, like procaspase-8, with the apoptotic regulator Bcl-2 or Bcl-XL. The cytosolic domain of BAP31 contains two identical caspase recognition sites, which are preferentially cleaved by initiator caspases, including caspase 8. Cleavage of BAP31 during apoptosis generates a p20 fragment, which remains integrated in the membrane and, when expressed ectopically, is a potent inducer of cell death. BAP31 cleavage is important for manifesting cytoplasmic apoptotic events associated with membrane fragmentation and in the cross talk between mitochondria and the endoplasmic reticulum during Fas-mediated apoptosis. The BAP31 gene is ubiquitously expressed in murine tissues and is located on the X chromosome in both mouse and human.

Inhibitor · Natural Compounds · Compound Libraries · Recombinant Proteins

This product is for Research Use Only · Not for Human or Veterinary or Therapeutic Use

Tel:781-999-4286 E_mail:info@targetmol.com Address:34 Washington Street,Wellesley Hills,MA 02481