

Anti-BANF1 Antibody (6R771)

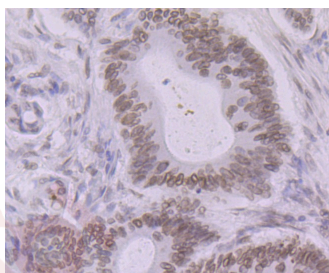
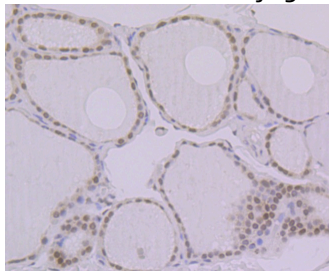
Product Details

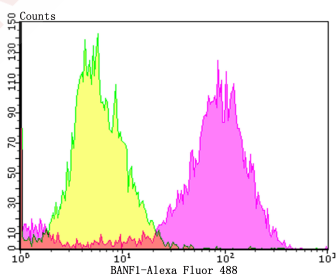
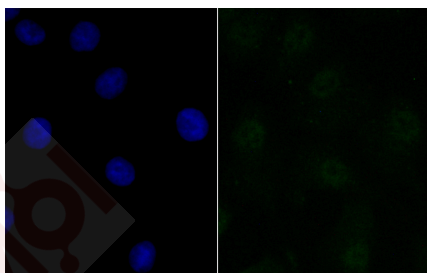
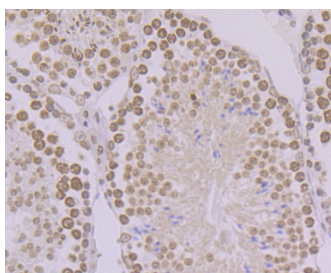
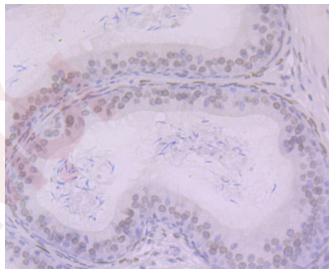
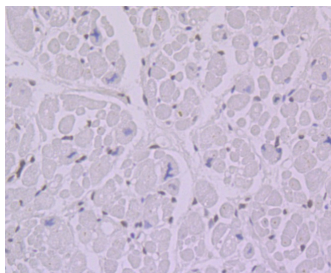
Ig Type:	IgG
Reactivity:	Human,Mouse,Rat
Conjugation:	Unconjugated
Molecular Weight:	Theoretical: 10 kDa.
Clone:	6R771
Purification:	ProA affinity purified

Applications

Verified Activity:

1. Immunohistochemical analysis of paraffin-embedded human thyroid gland tissue using anti-BANF1 antibody. Counter stained with hematoxylin.
2. Immunohistochemical analysis of paraffin-embedded human colon cancer tissue using anti-BANF1 antibody. Counter stained with hematoxylin.
3. Immunohistochemical analysis of paraffin-embedded human heart tissue using anti-BANF1 antibody. Counter stained with hematoxylin.
4. Immunohistochemical analysis of paraffin-embedded rat epididymis tissue using anti-BANF1 antibody. Counter stained with hematoxylin.
5. Immunohistochemical analysis of paraffin-embedded mouse testis tissue using anti-BANF1 antibody. Counter stained with hematoxylin.
6. ICC staining BANF1 in A549 cells (green). The nuclear counter stain is DAPI (blue). Cells were fixed in paraformaldehyde, permeabilised with 0.25% Triton X100/PBS.
7. Flow cytometric analysis of MCF-7 cells with BANF1 antibody at 1/100 dilution (purple) compared with an unlabelled control (cells without incubation with primary antibody; yellow). Alexa Fluor 488-conjugated goat anti-rabbit IgG was used as the secondary antibody.





Application: FCM,ICC,IHC,WB

Recommended IHC: 1:50-200; ICC: 1:50-100; FCM: 1:50-100

Properties

Stability & Storage: Store at -20°C or -80°C for 12 months. Avoid repeated freeze-thaw cycles.

Shipping: Shipping with blue ice.

Antigen Details

Immunogen: Recombinant Protein: Full length of human BANF1
Antigen Species: human
Uniprot ID: O75531
Synonyms: BCRP1;BAF_HUMAN;Barrier-to-autointegration factor;Breakpoint cluster region protein 1;BAF; BANF 1;BCRG 1;NGPS;BCRG1;BCRP 1;Barrier to autointegration factor 1;D14S1460;Barrier to autointegration factor;MGC111161

Research Background

Barrier-to-autointegration factor (BAF) binds non-specifically to double stranded DNA, possibly to play a role in tissue- or cell type-specific gene expression by interacting with different homeodomain transcription factors. BAF compresses chromatin structure and interacts with the LEM domain of nuclear proteins to play a crucial role in membrane recruitment and chromatin decondensation during nuclear assembly. Additionally, retroviruses like HIV-1 incorporate BAF from host cells into preintegration complexes (PICs) to prevent autointegration of retroviral DNA and thereby promote integration of retroviral DNA into the host chromosome.

Inhibitor · Natural Compounds · Compound Libraries · Recombinant Proteins

This product is for Research Use Only · Not for Human or Veterinary or Therapeutic Use

Tel:781-999-4286 E_mail:info@targetmol.com Address:34 Washington Street,Wellesley Hills,MA 02481