

Anti-BAF57 Antibody (2020)

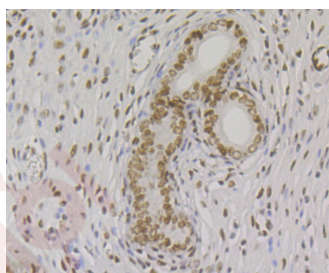
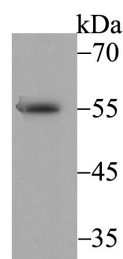
Product Details

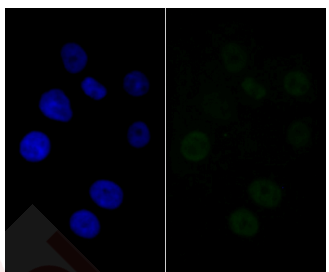
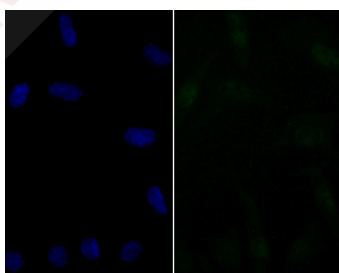
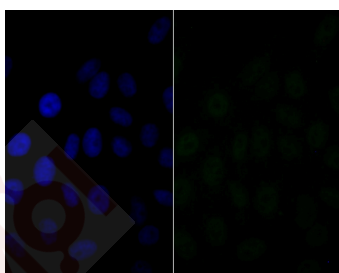
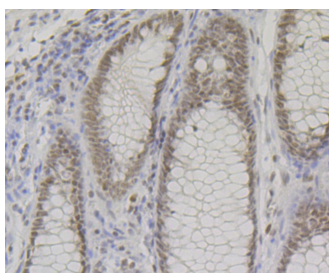
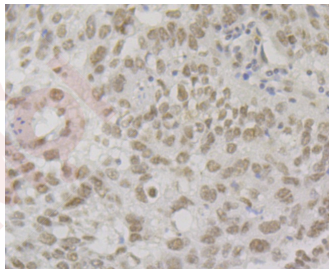
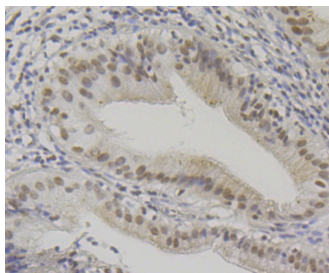
Ig Type:	IgG
Reactivity:	Human,Mouse,Rat
Conjugation:	Unconjugated
Molecular Weight:	Theoretical: 47 kDa.
Clone:	2020
Purification:	ProA affinity purified

Applications

Verified Activity:

1. Western blot analysis of BAF57 on SH-SY-5Y cell lysate using anti-BAF57 antibody at 1/1,000 dilution.
2. Immunohistochemical analysis of paraffin-embedded rat uterus tissue using anti-BAF57 antibody. Counter stained with hematoxylin.
3. Immunohistochemical analysis of paraffin-embedded human gallbladder tissue using anti-BAF57 antibody. Counter stained with hematoxylin.
4. Immunohistochemical analysis of paraffin-embedded human lung cancer tissue using anti-BAF57/SMARCE1 antibody. Counter stained with hematoxylin.
5. Immunohistochemical analysis of paraffin-embedded human colon tissue using anti-BAF57 antibody. Counter stained with hematoxylin.
6. ICC staining BAF57 in HepG2 cells (green). The nuclear counter stain is DAPI (blue). Cells were fixed in paraformaldehyde, permeabilised with 0.25% Triton X100/PBS.
7. ICC staining BAF57 in SH-SY-5Y cells (green). The nuclear counter stain is DAPI (blue). Cells were fixed in paraformaldehyde, permeabilised with 0.25% Triton X100/PBS.
8. ICC staining BAF57 in SK-Br-3 cells (green). The nuclear counter stain is DAPI (blue). Cells were fixed in paraformaldehyde, permeabilised with 0.25% Triton X100/PBS.





Application: ICC,IF,IHC,IP,WB

Recommended WB: 1:500-2000; IHC: 1:50-200; ICC:IF: 1:50-200; IP: 1:50-200

Properties

Stability & Storage: Store at -20°C or -80°C for 12 months. Avoid repeated freeze-thaw cycles.

Shipping: Shipping with blue ice.

Antigen Details

Immunogen: Recombinant Protein: human BAF57 aa 1-200

Antigen Species: human

Uniprot ID: Q969G3

Synonyms: SMCE1_HUMAN;SWI/SNF-related matrix-associated actin-dependent regulator of chromatin subfamily E member 1;BAF 57;SWI/SNF related matrix associated actin dependent regulator of chromatin e1;SWI/SNF related matrix associated actin dependent regulator of chromatin subfamily e member 1;SMARCE1;SMARCE 1;BRG1-associated factor 57;BRG1 associated factor 57;FLJ35648;Chromatin remodeling complex BRG1 associated factor 57

Research Background

The SWI/SNF complex is involved in the activation of transcription via the remodeling of nucleosome structure in an ATP-dependent manner. Brm (also designated SNF1 or SNF2 α) and Brg-1 (also designated SNF2 or SNF2 β) are the ATPase subunits of the mammalian SWI/SNF complex. Brm, Brg-1, Ini1 (integrase interactor 1, also designated SNF5), BAF155 (also designated SRG3) and BAF170 are thought to comprise the functional core of the SWI/SNF complex. In higher eukaryotes, BAF57 is also a critical component of the SWI/SNF complex. BAF57 contains a high-mobility-group (HMG) domain adjacent to a kinesin-like region and is a DNA-binding subunit of the SWI/SNF complex. The human BAF57 gene maps within the q12-25 region of chromosome 17, a gene-rich area implicated in breast and ovarian cancers.

Inhibitor · Natural Compounds · Compound Libraries · Recombinant Proteins

This product is for Research Use Only · Not for Human or Veterinary or Therapeutic Use

Tel:781-999-4286 E_mail:info@targetmol.com Address:34 Washington Street,Wellesley Hills,MA 02481