

## Anti-Bad Antibody (4Z819)

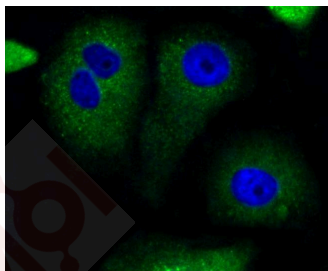
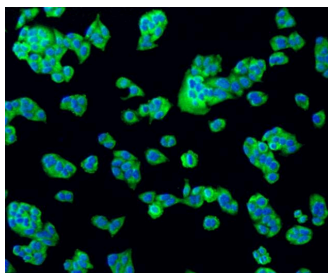
### Product Details

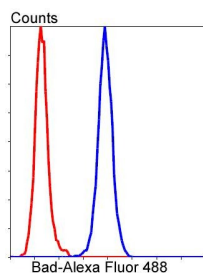
Ig Type:	IgG
Reactivity:	Human,Mouse,Rat
Conjugation:	Unconjugated
Molecular Weight:	Theoretical: 23 kDa.
Clone:	4Z819
Purification:	ProA affinity purified

### Applications

#### Verified Activity:

1. Western blot analysis of Bad on MCF-7 cell lysates using anti-Bad antibody at 1/500 dilution.
2. ICC staining Bad in Hela cells (green). The nuclear counter stain is DAPI (blue). Cells were fixed in paraformaldehyde, permeabilised with 0.25% Triton X100/PBS.
3. ICC staining Bad in MCF-7 cells (green). The nuclear counter stain is DAPI (blue). Cells were fixed in paraformaldehyde, permeabilised with 0.25% Triton X100/PBS.
4. Flow cytometric analysis of Hela cells with Bad antibody at 1/50 dilution (blue) compared with an unlabelled control (cells without incubation with primary antibody; red). Alexa Fluor 488-conjugated goat anti rabbit IgG was used as the secondary antibody.





Application: FCM,ICC/IF,IHC,IP,WB

Recommended WB: 1:500-1000; IHC: 1:50-200; ICC/IF: 1:50-200; FCM: 1:10-100

### Properties

Stability & Storage: Store at -20°C or -80°C for 12 months. Avoid repeated freeze-thaw cycles.

Shipping: Shipping with blue ice.

### Antigen Details

Immunogen: Recombinant Protein

Uniprot ID: Q92934

Synonyms: BCL2 antagonist of cell death protein;Bcl2-L-8;BCL2 associated agonist of cell death;BCL2 binding component 6;BAD\_HUMAN;BBC2;Bcl2 binding protein;Bcl-2-like protein 8;Bcl-2-binding component 6;Bcl2 Like 8 Protein;BBC 2;Proapoptotic BH3 Only Protein;Bcl 2 Binding Component 6;Bcl2 antagonist of cell death;BCL2L8;Bcl 2 Antagonist of Cell Death;Bcl XL/Bcl 2 Associated Death Promoter;A1325008;Bcl2 Associated Death Promoter;BAD;Bcl-XL/Bcl-2-associated death promoter;BCL X / BCL 2 Binding Protein;BCL X Binding Protein;BBC6

### Research Background

The Bcl-2 family of proteins is characterized by its ability to modulate cell death (apoptosis) under a broad range of physiologic conditions. Bcl-2 and several related proteins function to inhibit apoptosis while other members of the Bcl-2 family, such as Bax and Bak, enhance cell death under various conditions. For instance, Bcl-xL represses cell death, while its shorter form, Bcl-xS, promotes apoptosis. A protein designated Bad exhibits homology to Bcl-2 limited to the BH1 and BH2 domains. Bad functions to dimerize with Bcl-xL and with Bcl-2, but not with Bax, Bcl-xS, Mcl-1, A1 or itself. In mammalian cells, Bad binds with greater affinity to Bcl-xL than to Bcl-2 and reverses the death repressor activity of Bcl-xL but not Bcl-2. Dimerization of Bad with Bcl-xL results in displacement of Bax from Bcl-xL: Bax complexes thereby causing restoration of Bax-mediated apoptosis.

**Inhibitor · Natural Compounds · Compound Libraries · Recombinant Proteins**

This product is for Research Use Only · Not for Human or Veterinary or Therapeutic Use

Tel:781-999-4286 E\_mail:info@targetmol.com Address:34 Washington Street,Wellesley Hills,MA 02481