

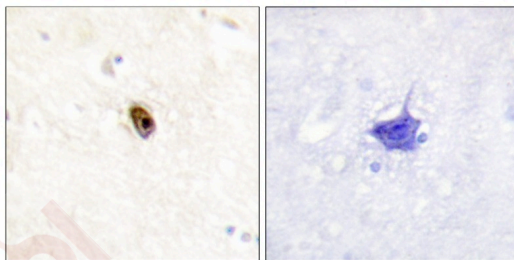
Anti-Phospho-AurB/C (Thr236/202) Polyclonal Antibody

Product Details

Ig Type:	IgG
Reactivity:	Human,Mouse,Rat
Conjugation:	Unconjugated
Molecular Weight:	Theoretical: 35 kDa.
Purification:	Antibodies were produced by immunizing rabbits with synthetic phosphopeptide and KLH conjugates. Antibodies were purified by affinity-chromatography using epitope-specific phosphopeptide. Non-phospho specific antibodies were removed by chromatography using non-phosphopeptide.

Applications

Verified Activity: 1. Immunohistochemistry analysis of paraffin-embedded human brain tissue using AurB/C (Phospho-Thr236/202) antibody TMAC-00348. The picture on the right is treated with the synthesized peptide.



Application:	IHC
Recommended	IHC: 1:50-100

Properties

Stability & Storage:	Store at -20°C or -80°C for 12 months. Avoid repeated freeze-thaw cycles.
Shipping:	Shipping with blue ice.

Antigen Details

Immunogen:	Peptide sequence around phosphorylation site of threonine 236/202 (C-G-T(p)-L-D) derived from Human AurB/C
Antigen Species:	Human
Uniprot ID:	Q9UQB9
Synonyms:	p-AurB/C (T236/202);p-AurB/C (Thr236/202);AurB/C (p-Thr236/202);AurB/C (p-T236/202)

Research Background

Serine/threonine-protein kinase component of the chromosomal passenger complex (CPC), a complex that acts as a key regulator of mitosis. The CPC complex has essential functions at the centromere in ensuring correct chromosome alignment and segregation and is required for chromatin-induced microtubule stabilization and spindle assembly. Plays also a role in meiosis and more particularly in spermatogenesis. Has redundant cellular functions with AURKB

A DRUG SCREENING EXPERT

and can rescue an AURKB knockdown. Like AURKB, AURKC phosphorylates histone H3 at 'Ser-10' and 'Ser-28'. Phosphorylates TACC1, another protein involved in cell division, at 'Ser-228'.

Inhibitor · Natural Compounds · Compound Libraries · Recombinant Proteins

This product is for Research Use Only · Not for Human or Veterinary or Therapeutic Use

Tel:781-999-4286 E_mail:info@targetmol.com Address:34 Washington Street,Wellesley Hills,MA 02481