

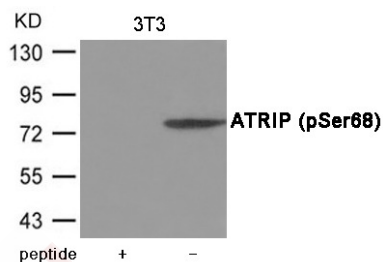
Anti-Phospho-ATRIP (Ser68) Polyclonal Antibody

Product Details

Ig Type:	IgG
Reactivity:	Human,Mouse,Rat
Conjugation:	Unconjugated
Molecular Weight:	Actual: 80 kDa.
Purification:	Antibodies were produced by immunizing rabbits with synthetic phosphopeptide and KLH conjugates. Antibodies were purified by affinity-chromatography using epitope-specific phosphopeptide. Non-phospho specific antibodies were removed by chromatography using non-phosphopeptide.

Applications

Verified Activity: 1. Western blot analysis of extracts from 3T3 cells using ATRIP (Phospho-Ser68) Antibody TMAC-00346. The lane on the left is treated with the antigen-specific peptide.



Application: WB

Properties

Stability & Storage: Store at -20°C or -80°C for 12 months. Avoid repeated freeze-thaw cycles.

Shipping: Shipping with blue ice.

Antigen Details

Immunogen:	Peptide sequence around phosphorylation site of Serine 68 (L-A-S(p)-Q-A) derived from Human ATRIP
Antigen Species:	human
Uniprot ID:	Q8WXE1
Synonyms:	ATRIP (p-Ser68);p-ATRIP (S68);ATRIP (p-S68);p-ATRIP (Ser68)

Research Background

Required for checkpoint signaling after DNA damage. Required for ATR expression, possibly by stabilizing the protein.

Inhibitor · Natural Compounds · Compound Libraries · Recombinant Proteins

This product is for Research Use Only · Not for Human or Veterinary or Therapeutic Use

Tel:781-999-4286 E_mail:info@targetmol.com Address:34 Washington Street,Wellesley Hills,MA 02481