

Anti-Phospho-ATRIP (Ser224) Polyclonal Antibody

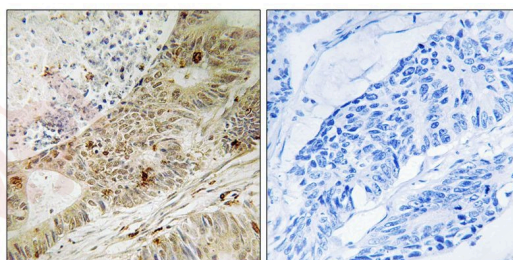
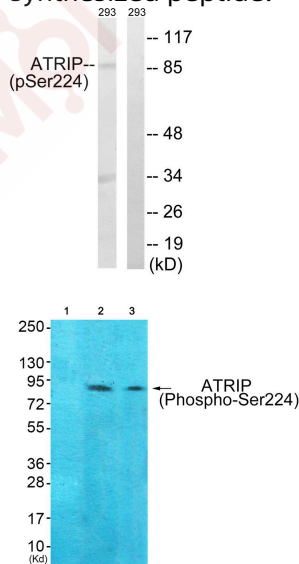
Product Details

| | |
|-------------------|--|
| Ig Type: | IgG |
| Reactivity: | Human |
| Conjugation: | Unconjugated |
| Molecular Weight: | Actual: 86 kDa. |
| Purification: | Antibodies were produced by immunizing rabbits with synthetic phosphopeptide and KLH conjugates. Antibodies were purified by affinity-chromatography using epitope-specific phosphopeptide. Non-phospho specific antibodies were removed by chromatography using non-phosphopeptide. |

Applications

Verified Activity:

1. Western blot analysis of extracts from 292 cells, treated with UV (15mins), using ATRIP (Phospho-Ser224) antibody TMAC-00345. The lane on the right is treated with the synthesized peptide.
2. Western blot analysis of extracts from 293 cells (Lane 2) and Hela cells (Lane 3), using ATRIP (Phospho-Ser224) Antibody TMAC-00345. The lane on the left is treated with synthesized peptide.
3. Immunohistochemistry analysis of paraffin-embedded human colon carcinoma tissue, using ATRIP (Phospho-Ser224) antibody TMAC-00345. The picture on the right is treated with the synthesized peptide.



Application: IHC,WB

A DRUG SCREENING EXPERT

Recommended WB: 1:500-3000; IHC: 1:50-100

Properties

Stability & Storage: Store at -20°C or -80°C for 12 months. Avoid repeated freeze-thaw cycles.

Shipping: Shipping with blue ice.

Antigen Details

Immunogen: Peptide sequence around phosphorylation site of serine 224 (H-V-S(p)-P-R) derived from Human ATRIP

Antigen Species: human

Uniprot ID: Q8WXE1

Synonyms: ATRIP (p-Ser224);ATRIP (p-S224);p-ATRIP (Ser224);p-ATRIP (S224)

Research Background

Required for checkpoint signaling after DNA damage. Required for ATR expression, possibly by stabilizing the protein.

Inhibitor · Natural Compounds · Compound Libraries · Recombinant Proteins

This product is for Research Use Only · Not for Human or Veterinary or Therapeutic Use

Tel:781-999-4286 E_mail:info@targetmol.com Address:34 Washington Street,Wellesley Hills,MA 02481