

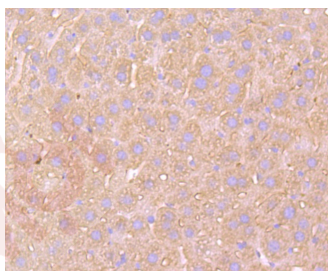
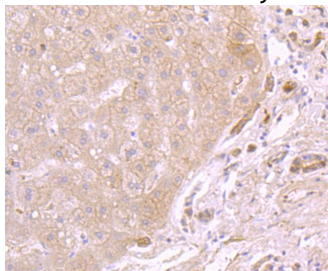
## Anti-ATP5A1 Antibody (7X811)

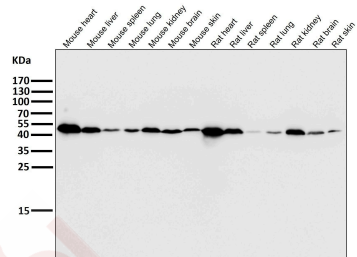
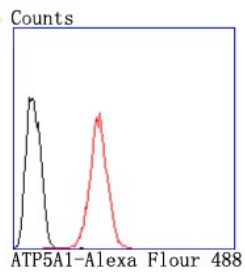
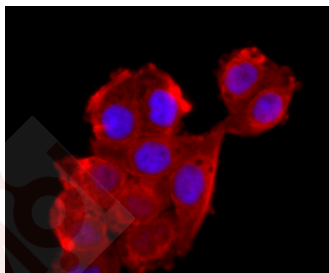
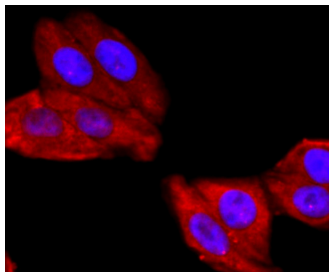
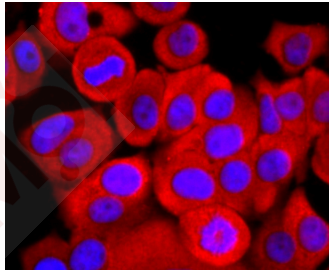
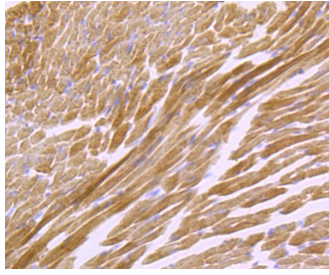
### Product Details

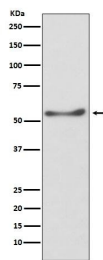
Ig Type:	IgG
Reactivity:	Human,Mouse,Rat
Conjugation:	Unconjugated
Molecular Weight:	Theoretical: 50 kDa.
Clone:	7X811
Purification:	Affinity-chromatography

### Applications

- Verified Activity:
1. Immunohistochemical analysis of paraffin-embedded human liver tissue using anti-ATP5A1 antibody. Counter stained with hematoxylin.
  2. Immunohistochemical analysis of paraffin-embedded mouse liver tissue using anti-ATP5A1 antibody. Counter stained with hematoxylin.
  3. Immunohistochemical analysis of paraffin-embedded mouse heart muscle tissue using anti-ATP5A1 antibody. Counter stained with hematoxylin.
  4. ICC staining ATP5A1 in MCF-7 cells (red). The nuclear counter stain is DAPI (blue). Cells were fixed in paraformaldehyde, permeabilised with 0.25% Triton X100/PBS.
  5. ICC staining ATP5A1 in HepG2 cells (red). The nuclear counter stain is DAPI (blue). Cells were fixed in paraformaldehyde, permeabilised with 0.25% Triton X100/PBS.
  6. ICC staining ATP5A1 in Hela cells (red). The nuclear counter stain is DAPI (blue). Cells were fixed in paraformaldehyde, permeabilised with 0.25% Triton X100/PBS.
  7. Flow cytometric analysis of Hela cells with ATP5A1 antibody at 1/50 dilution (red) compared with an unlabelled control (cells without incubation with primary antibody; black). Alexa Fluor 488-conjugated goat anti rabbit IgG was used as the secondary antibody.
  8. All lanes use the Antibody at 1:2K dilution for 1 hour at room temperature.
  9. Western blot analysis of ATP5A1 expression in HepG2 cell lysate.







Application: FCM,ICC/IF,IHC,WB

Recommended WB: 1:1000-2000; IHC: 1:100-200; ICC/IF: 1:50-200; FCM: 1:20-100

---

### Properties

Stability & Storage: Store at 2°C-8°C for 1 month. Store at -20°C or -80°C for 12 months. Avoid repeated freeze-thaw cycles.

Shipping: Shipping with blue ice.

---

### Antigen Details

Immunogen: A synthesized peptide: human ATP5A

Antigen Species: human

Uniprot ID: P25705

---

### Research Background

Mitochondrial ATP synthases (ATPases) transduce the energy contained in membrane electrochemical proton gradients into the energy required for synthesis of high-energy phosphate bonds. ATPases contain two linked complexes: F1, the hydrophilic catalytic core; and F0, the membrane-embedded protein channel. F1 consists of three  $\alpha$  chains and three  $\beta$  chains, which are weakly homologous, as well as one  $\gamma$  chain, one  $\delta$  chain and one  $e$  chain. F0 consists of three subunits: a, b and c. The  $\alpha$  chain of F1 is a regulatory subunit that contains 509 amino acids. Mitochondrial ATPase  $\alpha$  chain (ATP5A) localizes to the mitochondria and catalyzes ATP synthesis.

**Inhibitor · Natural Compounds · Compound Libraries · Recombinant Proteins**

This product is for Research Use Only · Not for Human or Veterinary or Therapeutic Use

Tel:781-999-4286 E\_mail:info@targetmol.com Address:34 Washington Street,Wellesley Hills,MA 02481

---