

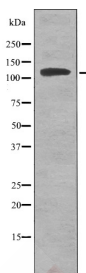
## Anti-Phospho-ATP1A1 (Tyr260) Polyclonal Antibody 2

## Product Details

|                   |  |
|-------------------|--|
| Ig Type:          | IgG  |
| Reactivity:       | Human,Mouse,Rat  |
| Conjugation:      | Unconjugated   |
| Molecular Weight: | Theoretical: 112 kDa.  |
| Purification:     | Antibodies were produced by immunizing rabbits with synthetic phosphopeptide and KLH conjugates. Antibodies were purified by affinity-chromatography using epitope-specific phosphopeptide. Non-phospho specific antibodies were removed by chromatography using non-phosphopeptide. |

## Applications

Verified Activity: 1. Western blot analysis ATP1A1 (Phospho-Tyr260) using HepG2 whole cell lysates.



Application: WB  
Recommended WB: 1:1000

## Properties

Stability & Storage: Store at -20°C or -80°C for 12 months. Avoid repeated freeze-thaw cycles.  
Shipping: Shipping with blue ice.

## Antigen Details

Immunogen: A synthesized phosphopeptide: human ATP1A1 around the phosphorylation site of Tyr260  
Antigen Species: human  
Uniprot ID: P05023  
Synonyms: p-ATP1A1 (Tyr260);p-ATP1A1 (Y260);ATP1A1 (p-Tyr260);ATP1A1 (p-Y260)

**Inhibitor · Natural Compounds · Compound Libraries · Recombinant Proteins**

This product is for Research Use Only. Not for Human or Veterinary or Therapeutic Use

Tel:781-999-4286 E\_mail:info@targetmol.com Address:34 Washington Street,Wellesley Hills,MA 02481