

## Anti-ATP citrate lyase/ACLY Antibody (8R855)

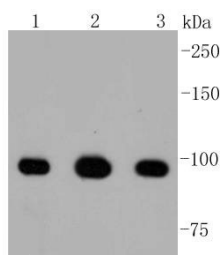
### Product Details

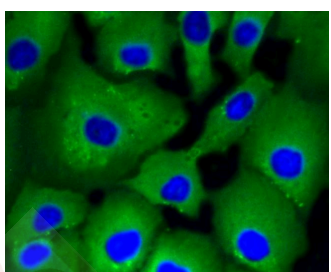
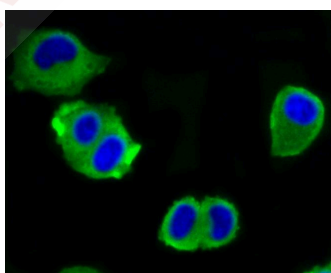
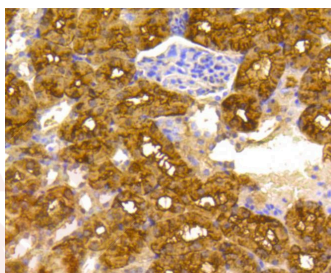
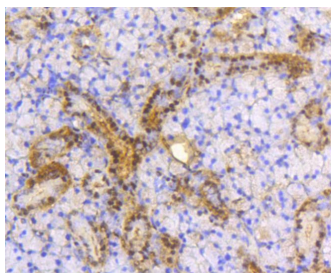
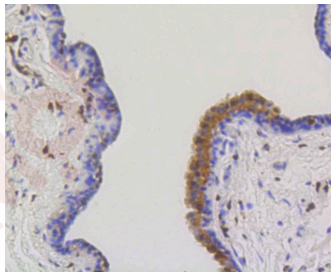
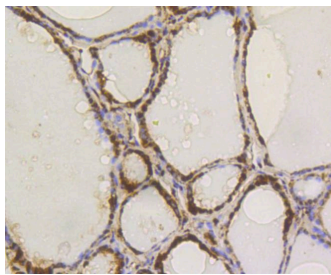
Ig Type:	IgG
Reactivity:	Human,Mouse,Rat
Conjugation:	Unconjugated
Molecular Weight:	Theoretical: 122 kDa.
Clone:	8R855
Purification:	ProA affinity purified

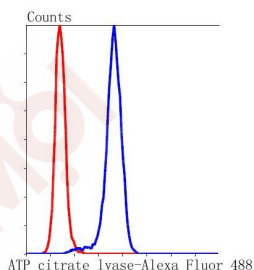
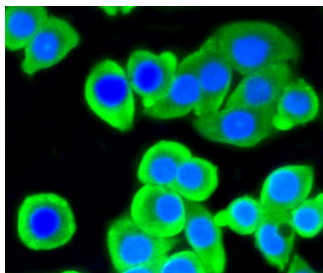
### Applications

#### Verified Activity:

1. Western blot analysis of ATP citrate lyase on different lysates using anti-ATP citrate lyase antibody at 1/1,000 dilution. Positive control: Lane 1: Mouse kidney, Lane 2: Mouse colon, Lane 3: MCF-7.
2. Immunohistochemical analysis of paraffin-embedded human thyroid tissue using anti-ATP citrate lyase citrate lyase antibody. Counter stained with hematoxylin.
3. Immunohistochemical analysis of paraffin-embedded human breast carcinoma tissue using anti-ATP citrate lyase antibody. Counter stained with hematoxylin.
4. Immunohistochemical analysis of paraffin-embedded mouse thyroid tissue using anti-ATP citrate lyase antibody. Counter stained with hematoxylin.
5. Immunohistochemical analysis of paraffin-embedded mouse kidney tissue using anti-ATP citrate lyase antibody. Counter stained with hematoxylin.
6. ICC staining ATP citrate lyase in Hela cells (green). The nuclear counter stain is DAPI (blue). Cells were fixed in paraformaldehyde, permeabilised with 0.25% Triton X100/PBS.
7. ICC staining ATP citrate lyase in A549 cells (green). The nuclear counter stain is DAPI (blue). Cells were fixed in paraformaldehyde, permeabilised with 0.25% Triton X100/PBS.
8. ICC staining ATP citrate lyase in CRC cells (green). The nuclear counter stain is DAPI (blue). Cells were fixed in paraformaldehyde, permeabilised with 0.25% Triton X100/PBS.
9. Flow cytometric analysis of Hela cells with ATP citrate lyase antibody at 1/50 dilution (blue) compared with an unlabelled control (cells without incubation with primary antibody; red). Alexa Fluor 488-conjugated goat anti rabbit IgG was used as the secondary antibody.







Application: FCM, ICC/IF, IHC, IP, WB

Recommended WB: 1:1000-2000; IHC: 1:50-200; ICC/IF: 1:50-200; FCM: 1:50-100

### Properties

Stability & Storage: Store at -20°C or -80°C for 12 months. Avoid repeated freeze-thaw cycles.

Shipping: Shipping with blue ice.

### Antigen Details

Immunogen: Recombinant Protein

Uniprot ID: P53396

Synonyms: ACL; ATPCL; ATP citrate lyase; CLATP

### Research Background

ATP-citrate synthase, also designated ATP-citrate lyase or citrate cleavage enzyme, is a cytoplasmic homotetramer belonging to the succinate/malate CoA ligase family. The gene coding for this protein maps against chromosome 17q12-q21. ATP-citrate synthase catalyses the formation of acetyl-CoA and oxaloacetate from citrate and CoA. This product, Acetyl-CoA, is necessary for both fatty acid and cholesterol biosynthesis. ATP citrate-lyase is important in the biosynthesis of acetylcholine in nervous tissue.

**Inhibitor · Natural Compounds · Compound Libraries · Recombinant Proteins**

This product is for Research Use Only · Not for Human or Veterinary or Therapeutic Use

Tel: 781-999-4286 E\_mail: info@targetmol.com Address: 34 Washington Street, Wellesley Hills, MA 02481