

Anti-ATM Antibody (1W166)

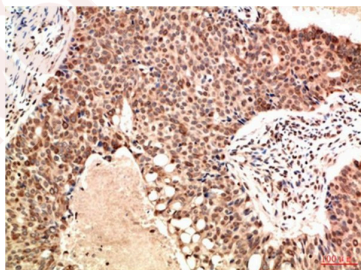
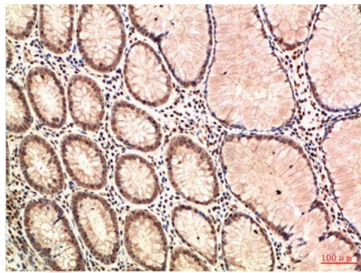
Product Details

Ig Type:	IgG1
Reactivity:	Human,Rat,Mouse
Conjugation:	Unconjugated
Molecular Weight:	Theoretical: 350 kDa.
Clone:	1W166

Applications

Verified Activity:

1. Immunohistochemical analysis of paraffin-embedded Human Colon Carcinoma Tissue using ATM Mouse mAb diluted at 1:200.
2. Immunohistochemical analysis of paraffin-embedded Human Breast Carcinoma Tissue using ATM Mouse mAb diluted at 1:200.



Application:	IHC
Recommended	IHC: 1:100-200

Properties

Stability & Storage:	Store at -20°C or -80°C for 12 months. Avoid repeated freeze-thaw cycles.
Shipping:	Shipping with blue ice.

Antigen Details

Immunogen: Recombinant Protein

Uniprot ID: Q13315

Synonyms: DKFZp781A0353;TELO1;homolog;Ataxia telangiectasia mutated homolog;Serine protein kinase ATM;A-T mutated;MGC74674;ATA;AT mutated;Telomere fusion protein;TEL1;ATM serine/threonine kinase;Tefu;ATE;Ataxia telangiectasia mutated;OTTHUMP00000232981;ATDC;ATC;ATD;AT1;A-T mutated homolog;Serine/threonine-protein kinase ATM;telomere maintenance 1

Inhibitor · Natural Compounds · Compound Libraries · Recombinant Proteins

This product is for Research Use Only · Not for Human or Veterinary or Therapeutic Use

Tel:781-999-4286 E_mail:info@targetmol.com Address:34 Washington Street,Wellesley Hills,MA 02481