

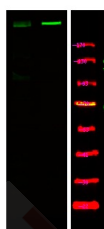
## Anti-Phospho-ATM (Ser1893) Polyclonal Antibody

## Product Details

Ig Type:	IgG
Reactivity:	Human
Conjugation:	Unconjugated
Molecular Weight:	Theoretical: 350 kDa.
Purification:	Antibodies were produced by immunizing rabbits with synthetic phosphopeptide and KLH conjugates. Antibodies were purified by affinity-chromatography using epitope-specific phosphopeptide. Non-phospho specific antibodies were removed by chromatography using non-phosphopeptide.

## Applications

Verified Activity: 1. Western Blot analysis of lysates of K562 cell (Left) and K562 cell treated with 100ng/mL LPS for 30min (Right), using primary antibody at 1:1000 dilution.



Application:	WB
Recommended	WB: 1:1000

## Properties

Stability & Storage: Store at -20°C or -80°C for 12 months. Avoid repeated freeze-thaw cycles.  
Shipping: Shipping with blue ice.

## Antigen Details

Immunogen:	A synthesized phosphopeptide: human ATM around the phosphorylation site of Ser183
Antigen Species:	human
Gene ID:	472
Uniprot ID:	Q13315
Synonyms:	ATM (p-S1893);p-ATM (Ser1893);ATM (p-Ser1893);p-ATM (S1893)

**Inhibitor · Natural Compounds · Compound Libraries · Recombinant Proteins**

This product is for Research Use Only. Not for Human or Veterinary or Therapeutic Use

Tel:781-999-4286 E\_mail:info@targetmol.com Address:34 Washington Street,Wellesley Hills,MA 02481