

Anti-ATG9A Antibody (7P88)

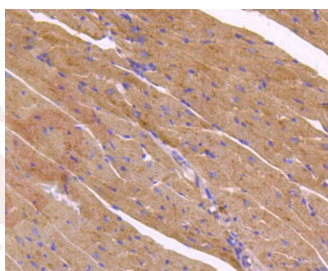
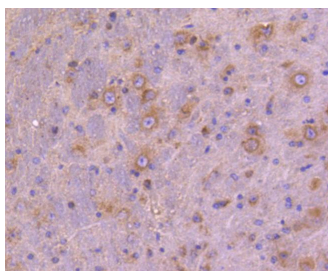
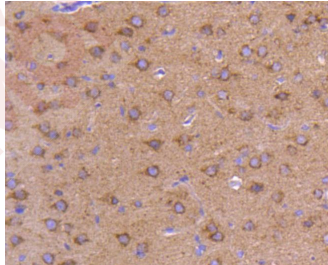
Product Details

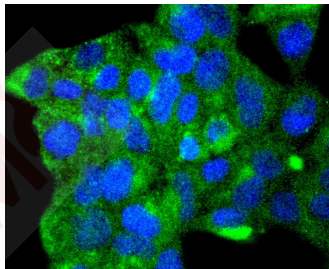
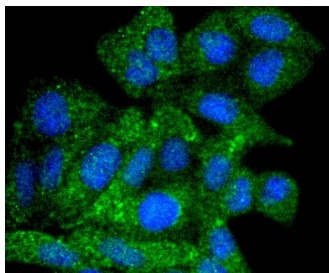
| | |
|-------------------|------------------------|
| Ig Type: | IgG |
| Reactivity: | Human,Mouse,Rat |
| Conjugation: | Unconjugated |
| Molecular Weight: | Theoretical: 94 kDa. |
| Clone: | 7P88 |
| Purification: | ProA affinity purified |

Applications

Verified Activity:

1. Immunohistochemical analysis of paraffin-embedded rat brain tissue using anti-ATG9A antibody. Counter stained with hematoxylin.
2. Immunohistochemical analysis of paraffin-embedded mouse brain tissue using anti-ATG9A antibody. Counter stained with hematoxylin.
3. Immunohistochemical analysis of paraffin-embedded mouse heart tissue using anti-ATG9A antibody. Counter stained with hematoxylin.
4. ICC staining ATG9A in Hela cells (green). The nuclear counter stain is DAPI (blue). Cells were fixed in paraformaldehyde, permeabilised with 0.25% Triton X100/PBS.
5. ICC staining ATG9A in 293 cells (green). The nuclear counter stain is DAPI (blue). Cells were fixed in paraformaldehyde, permeabilised with 0.25% Triton X100/PBS.





Application: ICC,IHC,IP,WB
Recommended WB: 1:1000; IHC: 1:50-200; ICC: 1:50-200

Properties

Stability & Storage: Store at -20°C or -80°C for 12 months. Avoid repeated freeze-thaw cycles.
Shipping: Shipping with blue ice.

Antigen Details

Immunogen: Recombinant Protein
Uniprot ID: Q7Z3C6
Synonyms: ATG9A;OTTHUMP00000206062;Autophagy related protein 9A;mATG9;OTTHUMP00000206049; OTTHUMP00000206046;APG9 like 1;APG9L1;APG9 autophagy 9-like 1;ATG9 autophagy related 9 homolog A;MGD3208;Autophagy 9-like 1 protein;ATG9;OTTHUMP00000206048;ATG9A_HUMAN; APG9-like 1;Autophagy-related protein 9A;ATG9 autophagy related 9 homolog A (*S. cerevisiae*)

Research Background

Autophagy, a process that results in the lysosomal-dependent degradation of cytosolic compartments, is carried out by the autophagosome, which is a double-membrane vesicle whose formation is catalyzed by several autophagy-related gene (Atg) proteins. Atg9a (autophagy-related protein 9A), also known as APG9-like 1, is a 839 amino acid, multi-pass membrane protein that localizes to the pre-autophagosomal structure (PAS). Isolation membranes are suggested to originate from the PAS, enwrapping cytoplasmic components to form a double membrane autophagosome, which then fuses with the vacuole. Ubiquitously expressed in human adult tissues, Atg9a cycles between the Golgi and endosomes and, with the autophagosome-specific marker LC3, plays a critical role in starvation-induced autophagosome formation. Three isoforms of Atg9a exist as a result of alternative splicing events.

Inhibitor · Natural Compounds · Compound Libraries · Recombinant Proteins

This product is for Research Use Only · Not for Human or Veterinary or Therapeutic Use

Tel:781-999-4286 E_mail:info@targetmol.com Address:34 Washington Street,Wellesley Hills,MA 02481