

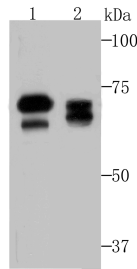
Anti-Atg16L1 Antibody (1W658)

Product Details

Ig Type:	IgG
Reactivity:	Human,Mouse,Rat
Conjugation:	Unconjugated
Molecular Weight:	Theoretical: 68/66 kDa.
Clone:	1W658
Purification:	ProA affinity purified

Applications

Verified Activity: 1. Western blot analysis of Atg16L1 on HeLa and PC-12 cell lysates using anti-Atg16L1 antibody at 1/500 dilution.



Application:	WB
Recommended	WB: 1:500-2000

Properties

Stability & Storage: Store at -20°C or -80°C for 12 months. Avoid repeated freeze-thaw cycles.
Shipping: Shipping with blue ice.

Antigen Details

Immunogen:	Recombinant Protein
Uniprot ID:	Q676U5
Synonyms:	ATG16L;OTTHUMP00000164393;ATG16 autophagy related 16 like 1;APG16L beta;FLJ22677;FLJ00045;A16L1_HUMAN;OTTHUMP00000165877;Atg16L1;OTTHUMP00000164391;APG16L;WD repeat domain 30;Autophagy-related protein 16-1;OTTHUMP00000165876;WDR30;FLJ10035;ATG16A;IBD10;APG16 like 1;FLJ10828;ATG16 autophagy related 16-like 1 (<i>S. cerevisiae</i>);Autophagy related protein 16 1;APG16-like 1

Research Background

Plays an essential role in autophagy: interacts with ATG12-ATG5 to mediate the conjugation of phosphatidylethanolamine (PE) to LC3 (MAP1LC3A, MAP1LC3B or MAP1LC3C), to produce a membrane-bound activated form of LC3 named LC3-II. Thereby, controls the elongation of the nascent autophagosomal membrane. Regulates mitochondrial antiviral signaling (MAVS)-dependent type I interferon (IFN-I) production. Negatively regulates NOD1- and NOD2-driven inflammatory cytokine response. Plays a role in regulating morphology and

function of Paneth cell.

Inhibitor · Natural Compounds · Compound Libraries · Recombinant Proteins

This product is for Research Use Only · Not for Human or Veterinary or Therapeutic Use

Tel:781-999-4286 E_mail:info@targetmol.com Address:34 Washington Street,Wellesley Hills,MA 02481