

Anti-ATF-4 Antibody (7M603)

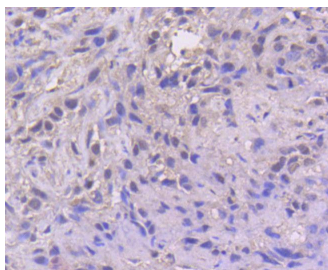
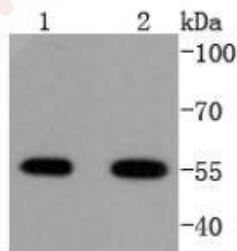
Product Details

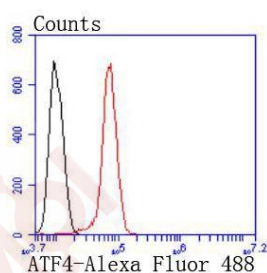
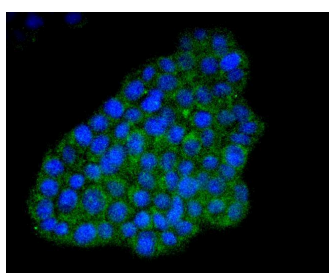
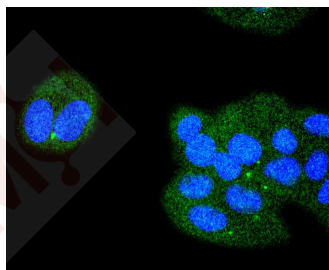
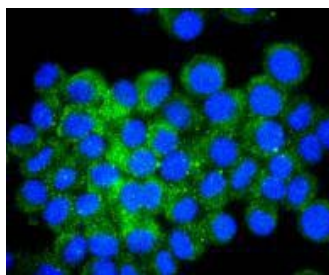
Ig Type:	IgG
Reactivity:	Human,Mouse,Rat
Conjugation:	Unconjugated
Molecular Weight:	Theoretical: 55 kDa.
Clone:	7M603
Purification:	ProA affinity purified

Applications

Verified Activity:

1. Western blot analysis of ATF4 on different lysates using anti-ATF4 antibody at 1/1,000 dilution. Positive control: Lane 1: Hela, Lane 2: PC-12.
2. Immunohistochemical analysis of paraffin-embedded human breast carcinoma tissue using anti-ATF4 antibody. Counter stained with hematoxylin.
3. ICC staining ATF4 in N2A cells (green). The nuclear counter stain is DAPI (blue). Cells were fixed in paraformaldehyde, permeabilised with 0.25% Triton X100/PBS.
4. ICC staining ATF4 in MCF-7 cells (green). The nuclear counter stain is DAPI (blue). Cells were fixed in paraformaldehyde, permeabilised with 0.25% Triton X100/PBS.
5. ICC staining ATF4 in PC-12 cells (green). The nuclear counter stain is DAPI (blue). Cells were fixed in paraformaldehyde, permeabilised with 0.25% Triton X100/PBS.
6. Flow cytometric analysis of Hela cells with ATF4 antibody at 1/50 dilution (red) compared with an unlabelled control (cells without incubation with primary antibody; black). Alexa Fluor 488-conjugated goat anti rabbit IgG was used as the secondary antibody.





Application: FCM, ICC/IF, IHC, IP, WB

Recommended WB: 1:1000; IHC: 1:50-200; ICC/IF: 1:50-200; FCM: 1:50-100

Properties

Stability & Storage: Store at -20°C or -80°C for 12 months. Avoid repeated freeze-thaw cycles.

Shipping: Shipping with blue ice.

Antigen Details

Immunogen: Recombinant Protein

Uniprot ID: P18848

Research Background

Eukaryotic gene transcription is regulated by sequence-specific transcription factors which bind modular cis-acting promoter and enhancer elements. The cAMP response element (CRE), one of the best studied of such elements, consists of the palindromic octanucleotide TGACGTCA. Several CRE binding proteins have been identified within the ATF/CREB family, the best characterized of which include CREB-1, CREB-2 (also designated ATF-4), ATF-1, ATF-2 and ATF-3. These proteins share highly related COOH terminal leucine zipper dimerization and basic DNA binding domains but are highly divergent in their amino terminal domains. Although each of the ATF/CREB proteins appear

A DRUG SCREENING EXPERT

capable of binding CRE in its homodimeric form, certain of these also bind as heterodimers, both within the ATF/CREB family and even with members of the AP-1 transcription factor family.

Inhibitor · Natural Compounds · Compound Libraries · Recombinant Proteins

This product is for Research Use Only · Not for Human or Veterinary or Therapeutic Use

Tel:781-999-4286 E_mail:info@targetmol.com Address:34 Washington Street,Wellesley Hills,MA 02481