

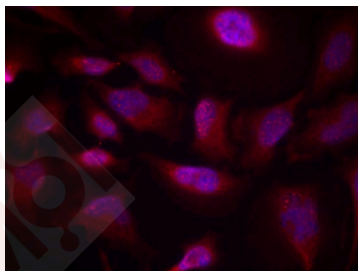
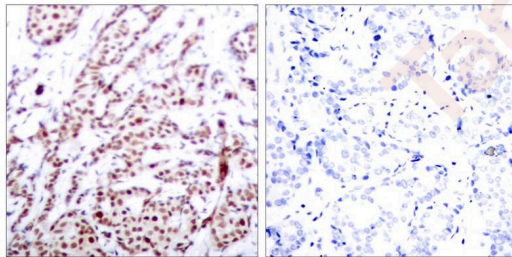
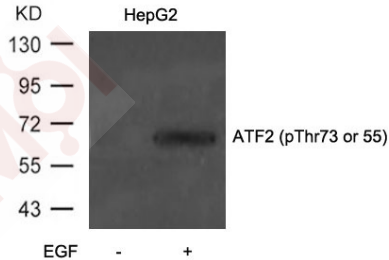
Anti-Phospho-ATF2 (Thr73 or 55) Polyclonal Antibody

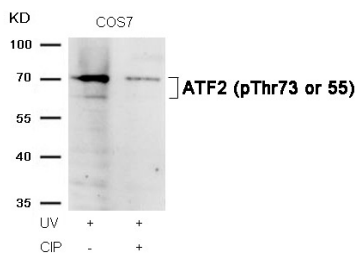
Product Details

Ig Type:	IgG
Reactivity:	Human,Mouse,Rat,Monkey
Conjugation:	Unconjugated
Purification:	Antibodies were produced by immunizing rabbits with synthetic phosphopeptide and KLH conjugates. Antibodies were purified by affinity-chromatography using epitope-specific phosphopeptide. Non-phospho specific antibodies were removed by chromatography using non-phosphopeptide.

Applications

- Verified Activity:
1. Western blot analysis of extracts from HepG2 cells untreated or treated with EGF using ATF2 (Phospho-Thr71 or 53) Antibody TMAC-00311.
 2. Immunohistochemical analysis of paraffin-embedded human breast carcinoma tissue using ATF2 (Phospho-Thr73 or 55) Antibody TMAC-00311(left) or the same antibody preincubated with blocking peptide (right).
 3. Immunofluorescence staining of methanol-fixed Hela cells using ATF2 (Phospho-Thr73 or 55) Antibody TMAC-00311.
 4. Western blot analysis of extracts from COS7 cells, treated with UV or calf intestinal phosphatase (CIP), using ATF2 (Phospho-Thr73 or 55) Antibody TMAC-00311.





Application: IF,IHC,WB

Properties

Stability & Storage: Store at 2°C-8°C for 1 month. Store at -20°C or -80°C for 12 months. Avoid repeated freeze-thaw cycles.

Shipping: Shipping with blue ice.

Antigen Details

Immunogen: Peptide sequence around phosphorylation site of threonine 73 or 55 (T-P-T(p)-R-F) derived from Human ATF2

Antigen Species: human

Uniprot ID: P15336

Synonyms: ATF2 (p-Thr73 or 55);ATF2 (p-T73 or 55);p-ATF2 (Thr73 or 55);p-ATF2 (T73 or 55)

Research Background

Transcriptional activator, probably constitutive, which binds to the cAMP-responsive element (CRE) (consensus: 5'-GTGACGT[AC][AG]-3'), a sequence present in many viral and cellular promoters. Interaction with JUN redirects JUN to bind to CREs preferentially over the 12-O-tetradecanoylphorbol-13-acetate response elements (TREs) as part of an ATF2-c-Jun complex.

Inhibitor · Natural Compounds · Compound Libraries · Recombinant Proteins

This product is for Research Use Only. Not for Human or Veterinary or Therapeutic Use

Tel:781-999-4286 E_mail:info@targetmol.com Address:34 Washington Street,Wellesley Hills,MA 02481