

Anti-Phospho-Ataxin 1 (Ser776) Polyclonal Antibody

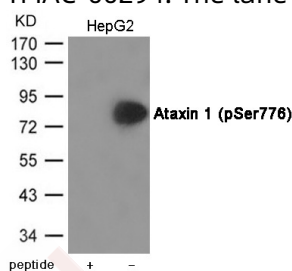
Product Details

Ig Type:	IgG
Reactivity:	Human,Mouse
Conjugation:	Unconjugated
Molecular Weight:	Actual: 87 kDa.
Purification:	Antibodies were produced by immunizing rabbits with synthetic phosphopeptide and KLH conjugates. Antibodies were purified by affinity-chromatography using epitope-specific phosphopeptide. Non-phospho specific antibodies were removed by chromatography using non-phosphopeptide.

Applications

Verified Activity:

1. Western blot analysis of extracts from HepG2 cells using Ataxin 1 (Phospho-Ser776) Antibody TMAC-00294. The lane on the left is treated with the antigen-specific peptide.



Application: WB

Properties

Stability & Storage: Store at -20°C or -80°C for 12 months. Avoid repeated freeze-thaw cycles.

Shipping: Shipping with blue ice.

Antigen Details

Immunogen:	Peptide sequence around phosphorylation site of Serine 776 (R-W-S(p)-A-P) derived from Human Ataxin 1
Antigen Species:	human
Uniprot ID:	P54253
Synonyms:	p-Ataxin 1 (S776);Ataxin 1 (p-S776);Ataxin 1 (p-Ser776);p-Ataxin 1 (Ser776)

Research Background

Chromatin-binding factor that repress Notch signaling in the absence of Notch intracellular domain by acting as a CBF1 corepressor. Binds to the HEY promoter and might assist, along with NCOR2, RBPJ-mediated repression. Binds RNA in vitro. May be involved in RNA metabolism. The expansion of the polyglutamine tract may alter this function.

Inhibitor · Natural Compounds · Compound Libraries · Recombinant Proteins

This product is for Research Use Only · Not for Human or Veterinary or Therapeutic Use

Tel:781-999-4286 E_mail:info@targetmol.com Address:34 Washington Street,Wellesley Hills,MA 02481