

## Anti-Phospho-Alpha-Synuclein (Tyr133) Polyclonal Antibody

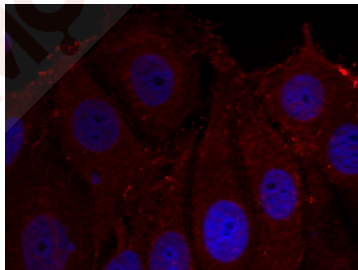
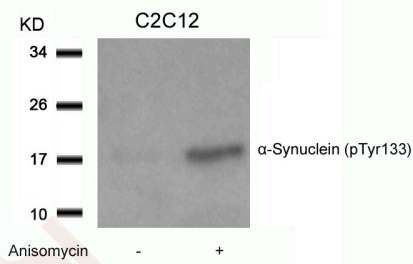
### Product Details

Ig Type:	IgG
Reactivity:	Human,Mouse,Rat
Conjugation:	Unconjugated
Purification:	Antibodies were produced by immunizing rabbits with synthetic phosphopeptide and KLH conjugates. Antibodies were purified by affinity-chromatography using epitope-specific phosphopeptide. Non-phospho specific antibodies were removed by chromatography using non-phosphopeptide.

### Applications

#### Verified Activity:

- Western blot analysis of extracts from C2C12 cells untreated or treated with Anisomycin using  $\alpha$ -Synuclein (Phospho-Tyr133) Antibody TMAC-00292.
- Immunofluorescence staining of methanol-fixed Hela cells using  $\alpha$ -Synuclein (Phospho-Tyr133) Antibody TMAC-00292.



Application: IF,WB

### Properties

Stability & Storage:	Store at 2°C-8°C for 1 month. Store at -20°C or -80°C for 12 months. Avoid repeated freeze-thaw cycles.
Shipping:	Shipping with blue ice.

### Antigen Details

Immunogen:	Peptide sequence around phosphorylation site of tyrosine 133 (E-G-Y(p)-Q-D) derived from Human $\alpha$ -Synuclein
Antigen Species:	human
Uniprot ID:	P37840
Synonyms:	p-Alpha-Synuclein (Y133);p-Alpha-Synuclein (Tyr133);Alpha-Synuclein (p-Y133);Alpha-Synuclein (p-Tyr133)

---

### Research Background

SncA is a member of the synuclein family of structurally related proteins that are prominently expressed in the central nervous system, which also includes beta- and gamma-synuclein. Synucleins are abundantly expressed in the brain and SncA and Snc-Beta inhibit phospholipase D2 selectively. SncA may serve to integrate presynaptic signaling and membrane trafficking. Aggregated SncA proteins form brain lesions that are hallmarks of neurodegenerative synucleinopathies. Defects in SncA play a role in the pathogenesis of Parkinson disease. SncA peptides are a major component of amyloid plaques in the brains of patients with Alzheimer disease. SncA shares 95% sequence homology with rat SncA. Rat SncA is specifically expressed in brain and is associated with synaptosomal membranes in neurons

**Inhibitor · Natural Compounds · Compound Libraries · Recombinant Proteins**

This product is for Research Use Only · Not for Human or Veterinary or Therapeutic Use

Tel:781-999-4286 E\_mail:info@targetmol.com Address:34 Washington Street,Wellesley Hills,MA 02481