

Anti-Phospho-Alpha-Synuclein (Ser129) Polyclonal Antibody

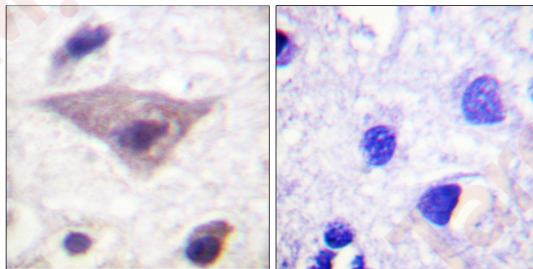
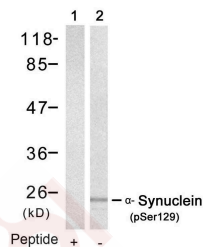
Product Details

Ig Type:	IgG
Reactivity:	Human,Mouse,Rat
Conjugation:	Unconjugated
Purification:	Antibodies were produced by immunizing rabbits with synthetic phosphopeptide and KLH conjugates. Antibodies were purified by affinity-chromatography using epitope-specific phosphopeptide. Non-phospho specific antibodies were removed by chromatography using non-phosphopeptide.

Applications

Verified Activity:

- Western blot analysis of extracts from mouse brain tissue using α -Synuclein (Phospho-Ser129) Antibody TMAC-00290 (Lane 2) and the same antibody preincubated with blocking peptide (Lane1).
- Immunohistochemistry analysis of paraffin-embedded human brain, using Synuclein (Phospho-Ser129) Antibody. The picture on the right is blocked with the phospho peptide.



Application: IF,IHC,WB

Properties

Stability & Storage:	Store at 2°C-8°C for 1 month. Store at -20°C or -80°C for 12 months. Avoid repeated freeze-thaw cycles.
Shipping:	Shipping with blue ice.

Antigen Details

Immunogen:	Peptide sequence around phosphorylation site of serine 129 (M-P-S(p)-E-E) derived from Human α -Synuclein
Antigen Species:	human
Uniprot ID:	P37840
Synonyms:	Alpha-Synuclein (p-S129);Alpha-Synuclein (p-Ser129);p-Alpha-Synuclein (Ser129);p-Alpha-Synuclein (S129)

Research Background

May be involved in the regulation of dopamine release and transport. Soluble protein, normally localized primarily at the presynaptic region of axons, which can form filamentous aggregates that are the major non amyloid component of intracellular inclusions in several neurodegenerative diseases (synucleinopathies). Induces fibrillization of microtubule-associated protein tau. Reduces neuronal responsiveness to various apoptotic stimuli, leading to a decreased caspase-3 activation.

Inhibitor · Natural Compounds · Compound Libraries · Recombinant Proteins

This product is for Research Use Only · Not for Human or Veterinary or Therapeutic Use

Tel:781-999-4286 E_mail:info@targetmol.com Address:34 Washington Street,Wellesley Hills,MA 02481