

Anti-Phospho-ASK1 (Ser966) Polyclonal Antibody

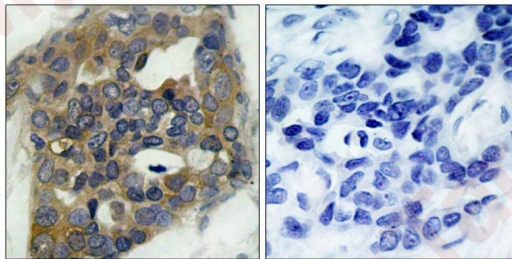
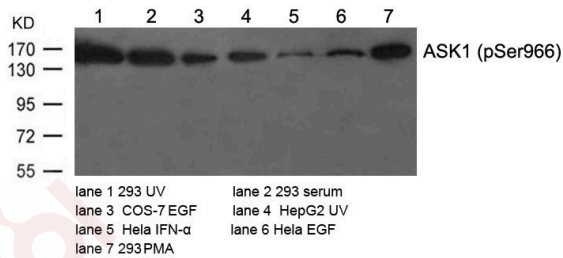
Product Details

Ig Type:	IgG
Reactivity:	Human,Mouse,Monkey
Conjugation:	Unconjugated
Purification:	Antibodies were produced by immunizing rabbits with synthetic phosphopeptide and KLH conjugates. Antibodies were purified by affinity-chromatography using epitope-specific phosphopeptide. Non-phospho specific antibodies were removed by chromatography using non-phosphopeptide.

Applications

1. Western blot analysis of extracts from various cells using ASK1(Phospho-Ser966) Antibody TMAC-00287.
2. Immunohistochemical analysis of paraffin-embedded human breast carcinoma tissue using ASK1(Phospho-Ser966) Antibody TMAC-00287(left) or the same antibody preincubated with blocking peptide(right).

Verified Activity:



Application: IHC,WB

Properties

Stability & Storage:	Store at 2°C-8°C for 1 month. Store at -20°C or -80°C for 12 months. Avoid repeated freeze-thaw cycles.
Shipping:	Shipping with blue ice.

Antigen Details

Immunogen:	Peptide sequence around phosphorylation site of serine 966 (S-I-S(p)-L-P) derived from Human ASK1
Antigen Species:	human
Uniprot ID:	Q99683
Synonyms:	ASK1;M3K5;MAP3K5;p-ASK1 (Ser966);MEKK 5;MAPKKK5;Mitogen-activated protein kinase kinase kinase 5;ASK1 (p-S966);MAPK/ERK kinase kinase 5;p-ASK1 (S966);Apoptosis signal-regulating kinase 1;ASK-1;MEK kinase 5;MEKK5;ASK1 (p-Ser966)

Research Background

Component of a protein kinase signal transduction cascade. Phosphorylates and activates MAP2K4 and MAP2K6, which in turn activate the JNK and p38 MAP kinases, respectively. Overexpression induces apoptotic cell death.

Inhibitor · Natural Compounds · Compound Libraries · Recombinant Proteins

This product is for Research Use Only · Not for Human or Veterinary or Therapeutic Use

Tel:781-999-4286 E_mail:info@targetmol.com Address:34 Washington Street,Wellesley Hills,MA 02481