

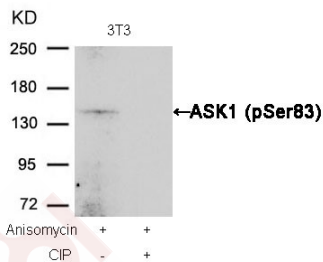
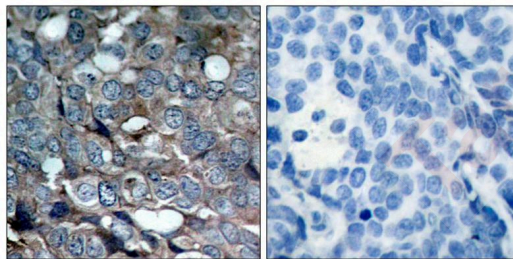
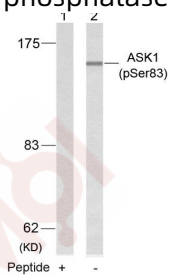
Anti-Phospho-ASK1 (Ser83) Polyclonal Antibody

Product Details

Ig Type:	IgG
Reactivity:	Human
Conjugation:	Unconjugated
Purification:	Antibodies were produced by immunizing rabbits with synthetic phosphopeptide and KLH conjugates. Antibodies were purified by affinity-chromatography using epitope-specific phosphopeptide. Non-phospho specific antibodies were removed by chromatography using non-phosphopeptide.

Applications

- Verified Activity:
- Western blot analysis of extracts from K562 cells using ASK1(Phospho-Ser83) Antibody TMAC-00286(Lane 2) and the same antibody preincubated with blocking peptide(Lane1).
 - Immunohistochemical analysis of paraffin-embedded human breast carcinoma tissue using ASK1(Phospho-Ser83) Antibody TMAC-00286(left) or the same antibody preincubated with blocking peptide(right).
 - Western blot analysis of extracts from 3T3 cells, treated with Anisomycin or calf intestinal phosphatase (CIP), using ASK1 (Phospho-Ser83) Antibody TMAC-00286.



Application: IHC,WB

A DRUG SCREENING EXPERT

Properties

Stability & Storage: Store at 2°C-8°C for 1 month. Store at -20°C or -80°C for 12 months. Avoid repeated freeze-thaw cycles.

Shipping: Shipping with blue ice.

Antigen Details

Immunogen: Peptide sequence around phosphorylation site of serine 83 (G-S-S(p)-V-G) derived from Human ASK1

Antigen Species: human

Uniprot ID: Q99683

Synonyms: MAP3K5;MEK kinase 5;M3K5;ASK1 (p-Ser83);p-ASK1 (S83);ASK1 (p-S83);ASK-1;MEKK 5;MEKK5;MAPK/ERK kinase kinase 5;p-ASK1 (Ser83);ASK1;Apoptosis signal-regulating kinase 1;Mitogen-activated protein kinase kinase kinase 5;MAPKKK5

Research Background

Component of a protein kinase signal transduction cascade. Phosphorylates and activates MAP2K4 and MAP2K6, which in turn activate the JNK and p38 MAP kinases, respectively. Overexpression induces apoptotic cell death.

Inhibitor · Natural Compounds · Compound Libraries · Recombinant Proteins

This product is for Research Use Only · Not for Human or Veterinary or Therapeutic Use

Tel:781-999-4286 E_mail:info@targetmol.com Address:34 Washington Street,Wellesley Hills,MA 02481