

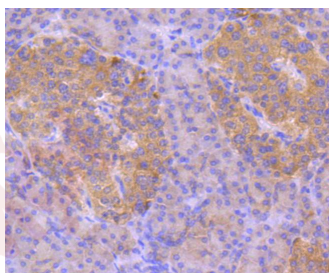
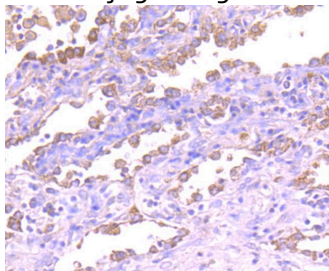
Anti-ASK1 Antibody (30802)

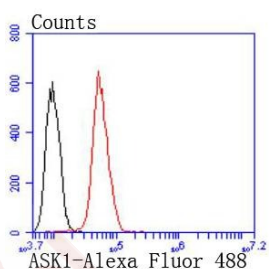
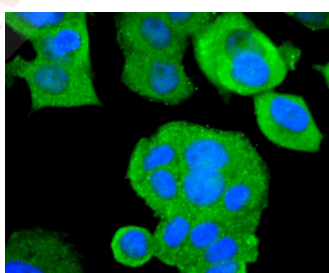
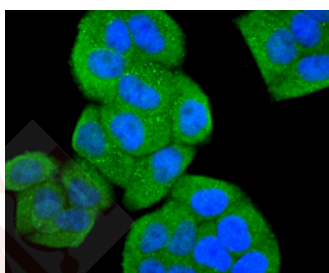
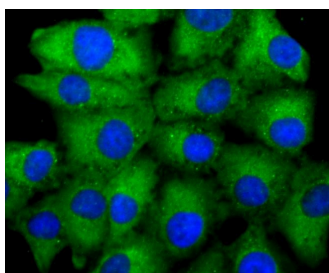
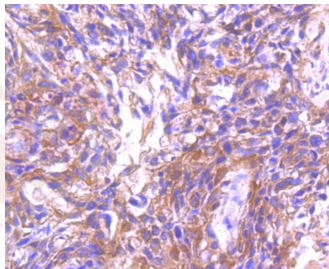
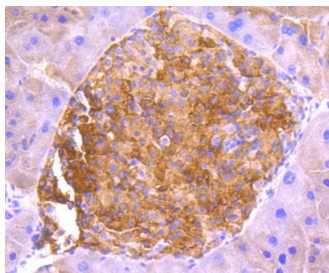
Product Details

Ig Type:	IgG
Reactivity:	Human,Mouse
Conjugation:	Unconjugated
Molecular Weight:	Theoretical: 155 kDa.
Clone:	30802
Purification:	ProA affinity purified

Applications

1. Immunohistochemical analysis of paraffin-embedded human lung cancer tissue using anti-ASK1 antibody. Counter stained with hematoxylin.
 2. Immunohistochemical analysis of paraffin-embedded human pancreas tissue using anti-ASK1 antibody. Counter stained with hematoxylin.
 3. Immunohistochemical analysis of paraffin-embedded mouse pancreas tissue using anti-ASK1 antibody. Counter stained with hematoxylin.
 4. Immunohistochemical analysis of paraffin-embedded human breast carcinoma tissue using anti-ASK1 antibody. Counter stained with hematoxylin.
- Verified Activity:
5. ICC staining ASK1 in A549 cells (green). The nuclear counter stain is DAPI (blue). Cells were fixed in paraformaldehyde, permeabilised with 0.25% Triton X100/PBS.
 6. ICC staining ASK1 in Hela cells (green). The nuclear counter stain is DAPI (blue). Cells were fixed in paraformaldehyde, permeabilised with 0.25% Triton X100/PBS.
 7. ICC staining ASK1 in MCF-7 cells (green). The nuclear counter stain is DAPI (blue). Cells were fixed in paraformaldehyde, permeabilised with 0.25% Triton X100/PBS.
 8. Flow cytometric analysis of Hela cells with ASK1 antibody at 1/50 dilution (red) compared with an unlabelled control (cells without incubation with primary antibody; black). Alexa Fluor 488-conjugated goat anti rabbit IgG was used as the secondary antibody.





Application: FCM, ICC/IF, IHC, WB

Recommended WB: 1:1000; IHC: 1:50-200; ICC/IF: 1:50-200; FCM: 1:50-100

Properties

Stability & Storage: Store at -20°C or -80°C for 12 months. Avoid repeated freeze-thaw cycles.

Shipping: Shipping with blue ice.

Antigen Details

Immunogen: Recombinant Protein

Uniprot ID: Q99683

Synonyms: M3K5; Apoptosis signal-regulating kinase 1; MAP3K5; ASK1; MEK kinase 5; MEKK 5; ASK-1; Mitogen-activated protein kinase kinase kinase 5; MAPKKK5; MAPK/ERK kinase kinase 5; MEKK5

Research Background

Mitogen-activated protein (MAP) kinase cascades are activated by various extracellular stimuli including growth factors. The MEK kinases (also designated MAP kinase kinase kinases, MKKKs, MAP3Ks or MEKKs) phosphorylate and thereby activate the MEKs (also called MAP kinase kinases or MKKs), including ERK, JNK and p38. These activated MEKs in turn phosphorylate and activate the MAP kinases. The MEK kinases include Raf-1, Raf-B, Mos, MEK kinase-1, MEK kinase-2, MEK kinase-3, MEK kinase-4, ASK 1 (MEK kinase-5) and MAP3K6 (MEK kinase-6). MEK kinase-1 has been shown to phosphorylate MEK-1 via a Raf-independent pathway. Evidence suggests that MEK-3 is preferentially activated by MEK kinase-3 and that MEK-4 is activated by both MEK kinase-2 and MEK kinase-3. MEK kinase-4 has been shown to specifically activate the JNK pathway. ASK1 activates both MEK-4 and MEK-3/MEK-6 pathways.

Inhibitor · Natural Compounds · Compound Libraries · Recombinant Proteins

This product is for Research Use Only · Not for Human or Veterinary or Therapeutic Use

Tel: 781-999-4286 E_mail: info@targetmol.com Address: 34 Washington Street, Wellesley Hills, MA 02481