

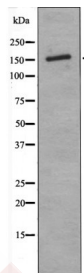
## Anti-Phospho-ASK1 (Thr838) Polyclonal Antibody

## Product Details

Ig Type:	IgG
Reactivity:	Human,Mouse
Conjugation:	Unconjugated
Molecular Weight:	Theoretical: 155 kDa.
Purification:	Antibodies were produced by immunizing rabbits with synthetic phosphopeptide and KLH conjugates. Antibodies were purified by affinity-chromatography using epitope-specific phosphopeptide. Non-phospho specific antibodies were removed by chromatography using non-phosphopeptide.

## Applications

Verified Activity: 1. Western blot analysis ASK1 (Phospho-Thr838) using PMA treated K562 whole cell lysates.



Application:	WB
Recommended	WB: 1:1000

## Properties

Stability & Storage: Store at -20°C or -80°C for 12 months. Avoid repeated freeze-thaw cycles.  
Shipping: Shipping with blue ice.

## Antigen Details

Immunogen:	A synthesized phosphopeptide: human ASK1 around the phosphorylation site of Thr838
Antigen Species:	human
Uniprot ID:	Q99683
Synonyms:	MEKK 5;ASK-1;M3K5;MEK kinase 5;ASK1 (p-T838);MAPKKK5;Apoptosis signal-regulating kinase 1;MAP3K5;Mitogen-activated protein kinase kinase kinase 5;ASK1 (p-Thr838);ASK1;p-ASK1 (Thr838);MEKK5;MAPK/ERK kinase kinase 5;p-ASK1 (T838)

**Inhibitor · Natural Compounds · Compound Libraries · Recombinant Proteins**

This product is for Research Use Only. Not for Human or Veterinary or Therapeutic Use

Tel:781-999-4286 E\_mail:info@targetmol.com Address:34 Washington Street,Wellesley Hills,MA 02481