

## Anti-ASH2L Antibody (4J278)

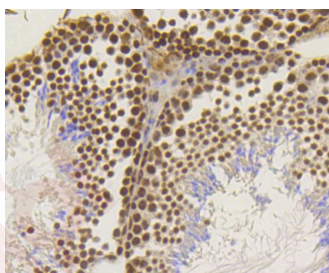
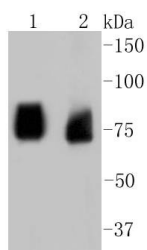
### Product Details

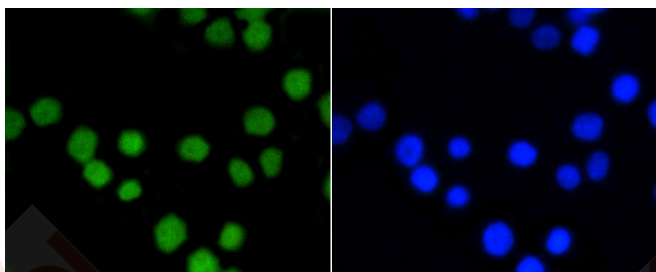
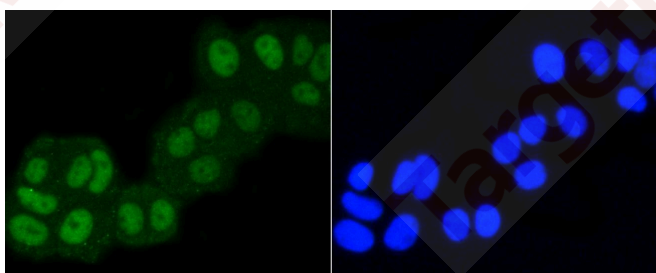
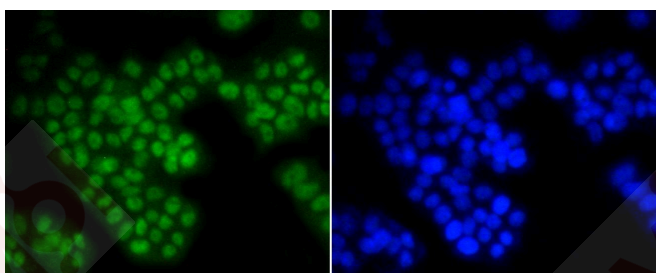
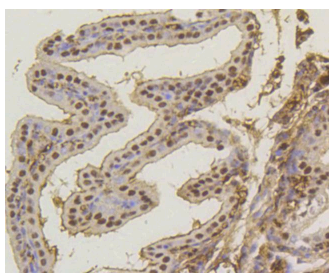
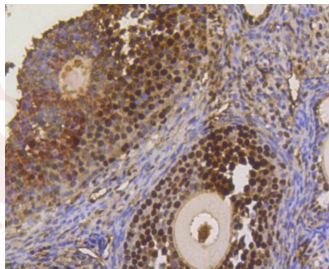
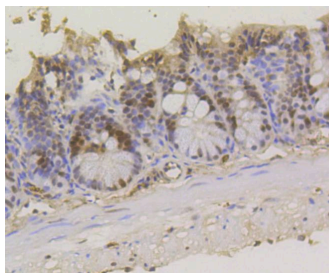
Ig Type:	IgG
Reactivity:	Human,Mouse,Rat
Conjugation:	Unconjugated
Molecular Weight:	Theoretical: 69 kDa.
Clone:	4J278
Purification:	ProA affinity purified

### Applications

#### Verified Activity:

1. Western blot analysis of ASH2L on different lysates using anti-ASH2L antibody at 1/1,000 dilution. Positive control: Lane 1: PC12, Lane 2: 293T.
2. Immunohistochemical analysis of paraffin-embedded mouse testis tissue using anti-ASH2L antibody. Counter stained with hematoxylin.
3. Immunohistochemical analysis of paraffin-embedded mouse colon tissue using anti-ASH2L antibody. Counter stained with hematoxylin.
4. Immunohistochemical analysis of paraffin-embedded mouse ovary tissue using anti-ASH2L antibody. Counter stained with hematoxylin.
5. Immunohistochemical analysis of paraffin-embedded mouse placenta tissue using anti-ASH2L antibody. Counter stained with hematoxylin.
6. ICC staining ASH2L in PC12 cells (green). The nuclear counter stain is DAPI (blue). Cells were fixed in paraformaldehyde, permeabilised with 0.25% Triton X100/PBS.
7. ICC staining ASH2L in MCF-7 cells (green). The nuclear counter stain is DAPI (blue). Cells were fixed in paraformaldehyde, permeabilised with 0.25% Triton X100/PBS.
8. ICC staining ASH2L in CRC cells (green). Cells were fixed in paraformaldehyde, permeabilised with 0.25% Triton X100/PBS.





Application: ICC/IF,IHC,WB

Recommended WB: 1:1000-5000; IHC: 1:200-500; ICC/IF: 1:200-500

### Properties

Stability & Storage: Store at -20°C or -80°C for 12 months. Avoid repeated freeze-thaw cycles.

Shipping: Shipping with blue ice.

---

### Antigen Details

Immunogen: Recombinant Protein

Uniprot ID: Q9UBL3

Synonyms: ASH2L1;ASH2-like protein;ASH2L;Set1/Ash2 histone methyltransferase complex subunit ASH2

---

### Research Background

The human ASH2L gene encodes a 628 amino acid protein known as ASH2L1, or isoform 1, which contains a nuclear localization signal and PHD finger motif, suggesting that the gene product functions as a transcription regulator. Alternative splicing results in a shorter isoform 2, designated ASH2L2, which is missing the first 94 amino acid residues found in ASH2L1. Human ASH2L proteins are 60% homologous to *Drosophila ash2*, which positively regulates expression of certain genes in early development, and contain similar, but not identical, domains, including a zinc finger motif. ASH2L is highly expressed in fetal liver, testis and leukemia cell lines with erythroid and megakaryocytic potential, such as K562, Hel and Dami. Differentiation inducers (e.g. phorbol ester and hemin) cause different expression patterns in these cells lines, suggesting that ASH2L plays a role in hematopoiesis and is associated with particular types of leukemia.

**Inhibitor · Natural Compounds · Compound Libraries · Recombinant Proteins**

This product is for Research Use Only · Not for Human or Veterinary or Therapeutic Use

Tel:781-999-4286 E\_mail:info@targetmol.com Address:34 Washington Street,Wellesley Hills,MA 02481